



Alpine Skiing

Team Leaders' Guide

December 2021



Welcome

On behalf of the Beijing 2022 Alpine Skiing team, it is a pleasure to extend a warm welcome to all the athletes and team officials in Beijing.

With our commitment to deliver a green, inclusive, open and clean Games, the Yanqing National Alpine Skiing Centre naming “Pearl on the Crown” , is the one of the most difficult construction project among all competition venues. Relying on the natural mountain form of Xiaohaituo Mountain in Yanqing District, the National Alpine Skiing Center provides 7 courses for different events with a total length of 21 kilometers and a vertical drop of 800 meters.

Despite the challenges we are facing due to the global COVID-19 pandemic, I believe the spirit of sport will heal, inspire and encourage all the participants and audience during the Olympic Winter Games Beijing 2022. You may find essential information about your discipline, the venue and all the services and facilities in this Guide that have been prepared to support you during your time in Beijing.

We look forward to your continuous support in helping us stage a joyful rendezvous upon pure ice and snow. With its rich history and sophisticated modernity, traditional culture and modern civilization, Beijing stands ready to become the first city in the world to host both the Summer and Winter editions of the Olympic Games, and to welcome friends from all over the world.

Good luck!

Zhenguo ZHENG
Sport Manager of Alpine Skiing
Beijing 2022

About the Team Leaders' Guide

All information, schedules and maps provided in this Guide was correct at the time of its publication in December 2021; however, please note that details may change between this date and the Games. For further updated information, please pay close attention to the latest policy released by related Beijing 2022 functional areas and the updated edition of this Guide for reference.



CONTENTS

Welcome	2
Olympic Identity and Accreditation Card (OIAC)	7
Beijing 2022 Accreditation Card Sample	7
Access Codes and Symbols	8
Spectating Athletes and Team Officials Policy	9
Same Discipline Athletes (SDA) & Different Discipline Athletes (DDA)	9
Transport	10
TA Transport System	10
Olympic Village Transport	11
Competition and Training Shuttle Bus Services	13
Transfer of Equipment from/to Olympic Village	15
Competition Information	17
Rules	17
Protests	18
Technical Delegates	19
Technical Officials	20
Competition Management Team	21
Team Captains' Meetings and Draws	22
Training	24
Race Office	25
Late Athlete Replacement Policy for the Olympic Winter Games Beijing 2022	26
Sport Information Desk/Sport Information Centre (SID/SIC)	27
Weather Services	28
Enforcement of Rule 50 of the Olympic Charter	29

Sport Services	30
Venue and Operational Facilities	30
Venue Access	32
Radio Frequency – Spectrum Management	33
Interpretation Services	36
Doping Control	37
General Principles	37
Games-time Operations	39
Safety	40
Safety Concerns	40
Emergency Services	41
Security	42
Access Control to Competition and Non-Competition Venues	43
Venue Security Perimeters	44
Transport and Security	45
List of Restricted and Prohibited Items	46
Medical Services	51
General Aspects	51
Medical Services at the Venues	52
Polyclinics	53
Olympic Hospitals	54
Emergency Medical Services and Transport	55
Interpretation Services	56
Public Health	57
Ceremonies	58
Opening and Closing Ceremonies	58
Victory Ceremonies	59
Medal Boxes and Diplomas	60

Mixed Zone and Press Conferences	61
General Principles for Interview Facilities	61
Mixed Zone Operations	62
Press Conferences Operations	64
Policy for COVID-19 Countermeasures	65
Appendix	66
Beijing 2022 Olympic Winter Games Competition Schedule Version 12	67
Beijing 2022 Olympic Winter Games Training Schedule	68
Beijing 2022 Olympic Winter Games Victory Ceremonies Schedule	70
Late Athlete Replacement Policy for the Olympic Winter Games Beijing 2022	71
Yanqing National Alpine Skiing Centre Competition Area Master Plan	73
Yanqing National Alpine Skiing Centre Master Plan	74
Yanqing National Alpine Skiing Centre Top Starting Area L1 Plan	75
Yanqing National Alpine Skiing Centre Middle Platform L1 Plan	76
Yanqing National Alpine Skiing Centre Concourse L4 & Speed Stadium Finish Area	77
Yanqing National Alpine Skiing Centre Speed Stadium Finish Area Stand and FOP Plan	78
Yanqing National Alpine Skiing Centre Technical Stadium Finish Area Stand and FOP Plan	79
Yanqing National Alpine Skiing Centre Lift G Bottom Station Enlarged Plan	80
Yanqing National Alpine Skiing Centre Lift E Bottom Station & Lift G Upper Station Enlarged Plan	81
Yanqing National Alpine Skiing Centre Team Captains' Meeting Room Plan	82
Yanqing Olympic Village Master Plan	83
TA Transport	84

Olympic Identity and Accreditation Card (OIAC)

Beijing 2022 Accreditation Card Sample

BEIJING 2022
Ac
国家(地区)奥委会

MENG DONGXUE
梦冬雪

CHEF DE MISSION
代表团团长

PEOPLE'S REPUBLIC OF CHINA
中国

1234567-01

ALL OLV OFH BRO MPC
ZPC

H 2 4 5 6 R

By issuing this Olympic Identity & Accreditation Card (Card), the International Olympic Committee (IOC) and the Beijing Organizing Committee for the 2022 Olympic and Paralympic Winter Games (Beijing 2022) have granted me rights relating to my participation in the XXV Olympic Winter Games in Beijing, People's Republic of China (Games), in particular access to venues and areas consistent with my functions at the Games. I agree to comply with the Accreditation Terms and Conditions applicable to the Games available on Beijing 2022's website (see <https://olympics.com/beijing-2022/en/olympic-accreditation/>), which include, without limitation, requirements and important information about: Compliance with the Olympic Charter, the IOC Code of Ethics, the Playbooks and any further regulations, decisions and/or instructions issued by Beijing 2022, the Chinese authorities or the IOC; -Request of the measures contained in the Playbooks (including any update thereto) aiming at protecting the health of the Games' participants and ensuring the safe staging of the Games; -Acknowledgment and acceptance of risks while participating at the Games; -Processing of my personal data; -Capture and use of images for the Games; I will visibly wear this Card at all times and shall not pass it on or transfer it to any other person. This Card is the property of the IOC and can be removed with immediate effect in the IOC's full discretion. In particular in case I do not respect and/or refuse to agree with the Accreditation Terms and Conditions.

Pour la version française, veuillez consulter les Conditions générales d'accréditation applicables aux Jeux olympiques d'hiver 2022 (<https://olympics.com/beijing-2022/fr/olympic-accreditation/>).

奥林匹克身份认证卡由国际奥委会(国际奥委会)和北京2022年冬奥会和冬残奥会组织委员会(北京冬奥组委)颁发,授予本人参加由中华人民共和国北京举办的第24届冬季奥林匹克运动会的相关权利。特别是授予与本人由冬奥会中履行职务对应的场馆和区域的权限。本人同意遵守北京冬奥组委网站(<https://olympics.com/beijing-2022/en/olympic-accreditation/>)中公布的所有冬奥会注册条款和条件,其中包括但不限于以下条款和重要信息:-遵守《奥林匹克宪章》《国际奥委会道德准则》《运动员手册》《北京冬奥会和冬残奥会相关国际奥委会发布的所有其他文件的规定、决定和指令》-遵守《运动员手册》(包括任何修正案)中旨在保护冬奥会参赛人员健康和冬奥会安全举办的各项措施。-了解并接受参加冬奥会的风险。-接受对个人数据的处理。-接受冬奥会图像采集和使用。本人承诺始终将此卡随身携带,不会借或转让此卡。此卡为国际奥委会财产,可以随时由国际奥委会全权决定,即刻撤销此卡,尤其是在本人不遵守和/或拒绝同意注册条款和条件的情况下。

梦冬雪
代表团团长
中国
110102198504220850
00000000
1234567-01

Atos

ALL	ALL COMPETITION/TRAINING VENUES 所有竞赛场馆和训练场馆	OLV	OLYMPIC VILLAGE 冬奥村
OFH	OLYMPIC FAMILY HOTEL 奥林匹克大家庭酒店	BRO	INTERNATIONAL BROADCAST CENTRE 国际转播中心、国家广播电视台中心
MPC	MAIN PRESS CENTRE 主新闻中心	ZPC	ZHANG BAOYU WOLONGJIAN PRESS CENTRE 张冰宇-龙间健新闻中心
2	ATHLETE PREPARATION AREAS 运动员准备区	4	PRESS AREAS 媒体工作区
5	BROADCAST AREAS 转播工作区	6	OLYMPIC FAMILY AREAS 奥林匹克大家庭区
R	RESIDENTIAL ZONE 奥运村居住区		FIELD OF PLAY 比赛场馆
	VILLAGE DINING 冬奥村餐饮	T3	SPORTS VEHICLE TRANSPORT SYSTEM 运动员专用车辆
	ATHLETE/SPECTATOR TRANSPORT SYSTEM 运动员及观众专用车辆		

H 2 4 5 6 R

Access Codes and Symbols

Venue codes and symbols printed on the front side of the card indicate access to competition and/or non-competition venues. A full description of the codes is available on the reverse side of the card.

Accreditation zones are secured areas reserved only for accredited persons who have access to corresponding zones in which they perform their Games-time functions.

Venue zone access rights are printed on the OIAC using colour and alphanumeric codes.

The accreditation zones inside the competition venues and Olympic Villages are as follows:

Access Code	Accessible Areas
BLUE	Field of Play (FOP) Operational areas (BOH) General circulation areas (Front of House [FOH], BOH)
RED	Operational areas (BOH), General circulation areas (FOH, BOH)
WHITE	General circulation areas (FOH)
"2"	Athlete preparation areas
"4"	Press areas
"5"	Broadcast areas
"6"	Olympic Family areas
"R"	Residential Zone (RZ) of the Olympic Village

Although included in this zone list, some particular areas inside the venue may be considered and managed as restricted areas, and the OIAC itself does not grant access to these areas.

Supplementary Access Control Devices (SACD), such as stickers, passes, bibs, armbands and tickets, will be required to enter the Field of Play, the Mixed Zone and the Ceremony areas.

Spectating Athletes and Team Officials Policy

Same Discipline Athletes (SDA) & Different Discipline Athletes (DDA)

Spectator tickets will only be available to residents of China's mainland who meet the conditions of COVID-19 control. Athletes and Team Officials will not have access to ticketed spectator areas.

Access to the accredited areas such as Same Discipline Athletes (SDA) seating or stand area is allowed upon the presentation of an OIAC. SDA are allowed to utilise TA service at the Yanqing Olympic Village TA Transport Mall to the venue. However, priority will be given to competing/training Athletes and their Team Officials.

For Different Discipline Athletes (DDA), tickets will be provided for spectating.

Transport

***Transport information in this Chapter and transport service maps in the Appendix were only for reference by the time of this Guide published. Please refer to the updated information in the *Athletes and Team Officials Transport Guide* which will be published in January, 2022 by the Beijing 2022 Transport Service Team.**

TA Transport System

The operation date of the TA transport system for Athletes and Team Officials is from January 27 after the opening of Yanqing Olympic Village. The system includes transport services between the Olympic Villages and competition and training venues in each zone; transport services between the Olympic Villages; transport services for Additional Team Officials; cross-zone transport services.

Olympic Village Transport

Olympic Village NOC Parking Lot

Each Olympic Village (OLV) will set up parking lots for NOC. Yanqing OLV parking lot is located in the northwest of Yanqing OLV.

Cross-zone Shuttle Bus

Beijing 2022 will provide TA transport services across the Beijing Olympic Village, Yanqing Olympic Village and Zhangjiakou Olympic Village. TA transport services connect the Olympic Villages in three zones.

Route	Origin	Time of Departure	Journey Length	Travel Time	Via	Time of Departure	Journey Length	Travel Time	Waiting Time	Destination	Time of Arrival	Journey Length in Total	Travel Time in Total
TA	Zhangjiakou Olympic Village	8:00	84 km	69 minutes	Yanqing Olympic Village	9:20	106 km	115 minutes	10 minutes	Beijing Olympic Village	11:15	190 km	195 minutes
		14:00	84 km	69 minutes		15:20	106 km	115 minutes	10 minutes		17:15	190 km	195 minutes
TA	Beijing Olympic Village	8:00	106 km	115 minutes	Yanqing Olympic Village	10:05	84 km	69 minutes	10 minutes	Zhangjiakou Olympic Village	11:15	190 km	195 minutes
		14:00	106 km	115 minutes		16:05	84 km	69 minutes	10 minutes		17:15	190 km	195 minutes

Transport Services for Additional Team Officials

TA shuttle bus service will be provided between the Olympic Village and the Additional Team Officials' official accommodation sites.

Route	Origin-Destination	Operating Period	Frequency	Travel Time/Journey Length	Note
TA	Marriott Hotel Beijing -Yanqing Olympic Village	January 27 -February 23	High: 60 minutes (4 hours to 1 hour before the first competition session)	49 minutes/38 km	1. Clean to Clean 2. Start service from 4 hours before first competition/training of day session;end service at 2 hours after the last competition/training of day
TA	Element Beijing -Yanqing Olympic Village	January 27 -February 23	Low: 120 minutes (Other period of time)	49 minutes/38 km	3. Will stop at Banquan first, and go to Yanqing Olympic Village, without transfer

Competition and Training Shuttle Bus Services

TA shuttle buses in Yanqing Zone will run between the Yanqing Olympic Village (YVL) and the competition venues in the Yanqing Venue Cluster to ensure the travel of Athletes and their Team Officials participating in the competition and training.

Route code	A-Y-1	Journey Length	7 km
Origin	YVL	Travel Time	25 minutes
Destination	Technical Stadium Finish Area of the Yanqing National Alpine Skiing Centre	Operation Period	First open training day -February 19
Capacity	16	Operation Hours	Three hours before the first competition until two hours after the last competition
Frequency	High: 15 minutes Low: 60 minutes		

High Frequency

3-4 hours before the start of training/competition and 1 hour after the training/competition.

Low Frequency

Other period of time.

Route code	A-Y-2	Journey Length	4.8 km
Origin	YVL	Travel Time	15 minutes
Destination	Speed Stadium Finish Area of the Yanqing National Alpine Skiing Centre	Operation Period	First open training day -February 19
Capacity	16	Operation Hours	Three hours before the first competition until two hours after the last competition
Frequency	High: 15 minutes Low: 60 minutes		

High Frequency

3-4 hours before the start of training/competition and 1 hour after the training/competition.

Low Frequency

Other period of time.

Besides, Athletes and Team Officials can take Gondola, at the Gondola A Station outside the Yanqing Olympic Village to the Speed Stadium Finish Area of the Yanqing National Alpine Skiing Centre, or ski from the Speed Stadium Finish Area of the Yanqing National Alpine Skiing Centre to return to the Yanqing Olympic Village.

Transfer of Equipment from/to Olympic Village

Service Time

A total of 55 days of service is provided, which starts on January 21, 2022 (14 days before the Opening Ceremony of the Olympic Winter Games Beijing 2022) and ends on March 16, 2022 (3 days after the Closing Ceremony of the Beijing 2022 Paralympic Winter Games).

Scope of Service

The transfer of sports equipment between airports and venues as well as between venues is covered by our service.

Transfer of Sports Equipment from Airports to Olympic Village

Upon arrival, if Athletes and Team Officials have sports equipment that is to be transferred directly from airports to Olympic Village, they are to consign their equipment to Beijing 2022 baggage delivery team at designated Baggage Claim and Delivery Area. Beijing 2022 baggage delivery team will check the baggage, confirm such related information with the NOC, baggage quantities and destinations, tag the baggage, and issue a consignment receipt. After consignment, Beijing 2022 logistics trucks will deliver these consigned sports equipment to Remote Material Screening Site (RMSS) for security checks, where all problem baggage will be temporarily stored until problems are solved by NOC representatives arriving afterwards, and the rest of the baggage will be delivered to their respective venues for a sports equipment handover process with consignment receipts.

Transfer of Sports Equipment Between Venues

Transfer of sports equipment between venues is prearranged according to competition schedule. Any additional equipment transfer needs to have advance reservation at logistics service desks of NOC Service Center in the Olympic Villages before 10 a.m., the previous day.

Transfer of Sports Equipment from Venues to Airports

Upon departure, sports equipment to be delivered directly from venues to airports needs to have advance reservation (specific time to be determined) at logistics service desks of NOC Service Center in the Olympic Villages. Beijing 2022 baggage delivery team will arrive at appointed time for baggage consignment. They will check the baggage, confirm such information with the NOC, corresponding flights and baggage quantities, tag the baggage, and issue a consignment receipt. With the consignment receipt, Athletes and Team Officials can claim their consigned sports equipment from Beijing 2022 baggage delivery team at designated baggage storage area (specific location to be determined).

Competition Information

Rules

The International Ski Competition Rules (ICR) (July, 2021) approved by the FIS Council in 2021 shall apply to the Olympic Winter Games Beijing 2022 Alpine Skiing competitions. In case of a disagreement in the interpretation of the rules, the English version prevails.

Any questions or incidents not covered by the rules are handled as follows:

- Cases of a general nature are resolved in accordance with the *Olympic Charter*.
- The Jury resolves technical questions according to the FIS rules.

The content of this Guide is for information purposes only. In case of discrepancies with the FIS rules and regulations, the FIS rules and regulations shall apply.

Protests

Protests must be submitted in writing within 15 minutes of the posting of the unofficial results. The protest must be submitted in English, accompanied by CHF 100 or RMB equivalent, in accordance with FIS rules. The competition Jury handles the protest in accordance with FIS rules and regulations.

Technical Delegates

Position	Name	Nationality
Technical Delegate Men's	Dough CAMPBELL	CAN
Technical Delegate Women's	Hans Peter PILZ	AUT

Technical Officials

Position	Name	Nationality
Chief Race Director (Men)	Markus WALDNER	ITA
Race Director DH/SG (Men)	Johannes TRINKL	AUT
Race Director GS/SL (Men)	Emmanuel COUDER	FRA
Technical Support (Men)	Michael KERTESZ	CAN
Chief Race Director (Women)	Peter GERDOL	ITA
Race Director DH/SG (Women)	Jean-Philippe VULLIET	FRA
Race Director GS/SL (Women)	Markus MAYR	AUT
Technical Support (Women)	Andreas KROENNER	GER
Jury Members (Men)	Ernesto CINGOLANI	ARG
Jury Members (Men)	Josef ZINGERLE	ITA
Jury Members (Men)	Hiroshi SAWANO	JPN
Jury Members (Women)	Monika Berwein SCHMID	GER
Jury Members (Women)	Laura SULLIVAN	USA
Jury Members (Women)	Anne Catherine ENSTAD	NOR
Alpine Skiing FIS Communications	Giulia CANDIAGO	ITA
Equipment Controller	Bernhard RUSSI	SUI
Alpine Medical Supervisor	Hubert HÖRTERER	GER
FIS Marketing	Juerg CAPOL	SUI
FIS Media	Jenny WIEDEKE	SUI
FIS Jury Coordinator/Secretariat (Alpine Skiing)	Tatjana LUESSY	SUI
FIS IT Manger	Daniel DEFAGO	SUI

Competition Management Team

Position	Name
Sport Manager	Zhenguo ZHENG
Deputy Sport Manager	Linbin AN
Sport Coordinator	Jin LIU
Sport Coordinator	Liujun ZHANG
Sport Coordinator	Xiang GUO
Sport Assistant	Siwei YANG
Sport Assistant	Xu HE
Sport Assistant	Yuan LIU
Sport Assistant	Haizhu QI
Sport Assistant	Xinyu ZHANG
Technical Expert	Atle SKAARDAL (NOR)
Foreign NTO Contact	Alexandra SEREGINA (RUS)
Assistant Chief of Race (Speed)	Viktor GICHEV (BUL)
Assistant Chief of Course (Speed)	Thomas Davies JOHNSTON (USA)
Race Secretary	Assia ILIEVA (BUL)
Race Secretary	Nade KARIDOVA (BUL)
Chief of Race	Linbo AN
Chief of Race	Yi ZHANG
Assistant Chief of Race (Technical)	Hans PIEREN (SUI)
Assistant Chief of Course (Technical)	Valentin Stefanov GICHEV (BUL)
Alpine Skiing Mountain Manager (Speed & Technical)	Nikolay BELOKRINKIN (RUS)
Finish Advisor	Vlad LOSEV (RUS)
Video Control	Brian LYNAM (CAN)

Team Captains' Meetings and Draws

The Team Captains' Meeting Room is located in the second basement floor of public cluster-south of public core area of Yanqing competition zone, next to Olympic Village and Gondola A station, out of the security line. The Team Captains' Meetings and Draws will take place in the evening before official training and competition day.

Schedule

Date	Time	Event
February 2	17:00-18:00	M
February 3	17:00-18:00	M
February 4	17:00-18:00	M
February 5	17:00-18:00	M
February 6	17:00-18:00	W
February 7	17:00-18:00	M
February 8	17:00-18:00	W
	18:30-19:30	M
February 9	17:00-18:00	M
February 10	17:00-18:00	W
February 11	17:00-18:00	W
February 12	17:00-18:00	W
	18:30-19:30	M
February 13	18:00-19:00	W
February 14	17:00-18:00	W
February 15	17:00-18:00	W
	18:30-19:30	M
February 16	17:00-18:00	W
February 17	-	-
February 18	17:00-18:00	Mixed Team Parallel

The final time schedule is subject to the arrangement of the day.

Supplementary Access Control Devices (SACD)

SACDs (armbands) are distributed to team officials by FIS Race Director at the Team Captains' Meetings. These devices permit access to accreditation zones within the 2 and Blue.



Training

Training and warm-up slopes will be available to all teams on January 27-February 19, 2022 at the Yanqing National Alpine Skiing Centre. Teams can schedule their trainings at the Race Office.

According to the agreement with FIS, teams will bring the poles, gate panels and other equipment for training and warm-up. Drills, gate keys and others will be the responsibility of the NOCs.

Race Office

The Race Office will be opened to the Team Captains and IF on January 25-February 19, 2022. The operation time verifies according to the Competition Schedule.

The main Race Office is located in the second basement floor of public cluster-south of public core area of Yanqing competition zone, next to Olympic Village and Gondola A bottom station beside TCM Room.

- Speed Stadium

The sub-Race Office is located in the finish area, skiers right side, next to VMC building, on the first floor.

- Technical Stadium

The sub-Race Office is located in the finish area, next to the spectator stand area, on the first floor.

Late Athlete Replacement Policy for the Olympic Winter Games Beijing 2022

Please refer to the Appendices in this Guide for detailed reference.

Sport Information Desk/Sport Information Centre (SID/SIC)

The Sport Information Desk (SID) will be set up at each competition venue. The Sport Information Centre (SIC) will be set up in the NOC Service Centre in each Olympic Village. The SIC and SID will provide competition and training information to all NOCs and address questions/requests of Athletes and Team Officials concerning the Sport.

Training Schedule, Competition Schedule, Start Lists, Results Lists, Official Communication, Sport Communication, Weather Information, Team Leaders' Guide, Technical Officials' Guide, other sport information/publications and real-time updates during the day, will be distributed through both SIC and SID.

Weather Services

Weather Information will be provided mainly through weather report on INFO and myINFO in PDF version, the Beijing 2022 Olympic and Paralympic Winter Games Weather Service website at https://olympic.weather.com.cn/en_dongao/, and briefings at Team Captains' Meetings and at the Field of Play. Routine weather information will also be available at Sport Information Desks.

Historical Weather Data of Yanqing Zone

	February	March
Normal average temperature	-4.1°C (Range: 10.2°C~3.3°C)	2.8°C (Range:3.6°C~9.8°C)
Monthly mean precipitation	3.4 mm	9.2 mm
Total duration for precipitation	2.2 days	3.8 days
The recent 10-year (2012-2021) average temperature during the Olympic period	-3.8°C	
The extremely High temperature during the Olympic period from 1981 to 2021	19.7°C (February 20, 2021)	
The daily maximum precipitation during the Olympic period from 1981 to 2021	12.6 mm (February 14, 2020)	

Enforcement of Rule 50 of the Olympic Charter

Please refer to the IOC website for detailed reference:

<https://olympics.com/ioc/news/ioc-athletes-commission-s-recommendations-on-rule-50-and-athlete-expression-at-the-olympic-games>

Sport Services

Venue and Operational Facilities

For the exact locations, please refer to the maps in the Appendices of this Guide.

Venue

Athletes' Lounge

The Athletes' Lounge opens 3 hours before the start of the general training and closes 3 hours after the end of the official training or competition. It operates fully from January 27, 2022 with all services.

- Speed Stadium

The main lounge is located in the concourse next to the Gondola A top station.

The sub lounge is at the top of the mountain.

- Technical Stadium

The main lounge nearby the Lift G bottom station. The sub lounge located at the Lift E bottom station.

Athlete Food Services

Hot meal will be provided only for the two-run race Hot and cold beverages, snacks will be available in the sub Athletes' Lounge.

Cold drinks will be also provided in warm-up tents in each start area.

Jury Room

- Speed Stadium

The Jury Room is located in the finish area, skiers right side, next to VMC building, on the first floor.

- Technical Stadium

The Jury Room is located in the finish area, next to the spectator stand area, on the first floor.

Coaches' Area

A restricted coach area in speed venue is located at the exit gate skier left, in technical venue is located at the exit gate skier's right side. Access cards to the restricted coach area will be provided by Race Office.

Bib Distribution

Bibs distribution will take place in the start area just before the start of each race. Bibs are not required for athletes' course inspection.

Events Entry Forms

The entry forms have to be signed by Team Captains and brought to the Race Office/TCM Room (teams will be informed regarding the place in advance) no later than three hours before the Team Captains' Meeting for the respective event.

Results Distribution

At the venue, results will be available at the Sport Information Desk in the Athletes' Lounge.

Venue Access

Access to the Course

Training in identified areas at the Yanqing National Alpine Skiing Centre will be allowed for accredited people. Supplemental course access (armband) is required during all official training and competition. Supplemental course access will be distributed at Team Captains' Meetings by FIS Chief Race Directors.

Access to the Venue

Teams may use the TA system or Lifts to get to the venue. Access to the venue will be allowed only for the persons with appropriate accreditation.

Ski Lifts

Validated Olympic accreditation (OIAC) or bibs will serve as a Gondola ticket.

Radio Frequency – Spectrum Management

During the Beijing 2022 Olympic and Paralympic Winter Games, all NOC users (including teams and athletes) planning to use radio equipment in the Olympic venues and special control areas, shall register and submit frequency applications in the Spectrum Order Portal (SOP, <https://spectrum.beijing2022.cn>) by December 31, 2021. Once an application has been reviewed and approved, the Radio Equipment Frequency License will be issued by the Ministry of Industry and Information Technology of the People’s Republic of China to the user. Frequency must be used in accordance with the requirements indicated on the frequency license.

All users are encouraged to apply early due to the limited availability of radio resources within the venues. The approval rate is higher in the normal period of frequency application (from January 1 to June 15, 2021).

Period	Order Period	Frequency Approval Period	Description
Normal Period	January 1-June 15, 2021	Before October 15, 2021	Strongly recommend users to apply in this period. Spectrum applications received during this period will be processed for batch approval without prioritizing the time of application.
Cut-off	June 16-30, 2021		Data review
Late Period	July 1-November 30, 2021	Before January 15, 2022	The application process is based on first-come-first-served basis and there is no guarantee that the frequency of applications will be approved.
Cut-off	December 1-31, 2021		Data review
Extraordinary Application Period (Games time)	January 1-March 13, 2022	Games-time	Only spectrum requests under urgent circumstances will be eligible. Availability is low.

Testing and Tagging

After arriving in China, NOC users who have obtained the frequency license are required to take their radio equipment to the designated locations for testing by the technical agency designated by Beijing 2022. The agency staff will test the radio frequency parameters of the equipment to ensure that it matches the specifications outlined in the frequency license, and pasted a Special Tag for the equipment that passes the tests. Then, the radio equipment can be used strictly following the time and area requirements indicated on the Special Tag.

The specific time and location for testing and tagging will be published on the SOP.

Equipment Inspections at Venue Entry

All radio transmitting equipment shall be inspected for authorisation by security staff before entering the venues. Equipment without the Special Tag will not be allowed into the venues (except for the equipment exempted from testing and tagging specified in Section 4.1 of the Spectrum Management Plan). In order to avoid delay for entry, please make sure to complete the testing and tagging process before arriving at the venue entrance.

Interference

Radio monitoring will be conducted to identify and prevent interference and illegal use of unlicensed frequencies. In case of radio interference, please inform the venue staff in time and cooperate to identify and eliminate the interference. Meanwhile, it should also be emphasized that users shall avoid the unauthorised use of radio spectrum.

For more details, please refer to **the Spectrum Management Plan for the Beijing 2022 Olympic and Paralympic Winter Games** published on the official website of Beijing 2022.

Special note1: Cameras with wireless transmission modules (including 2.4GHz and 5.8GHz bands) should be regarded as “Wireless Camera”. Users shall submit frequency applications for those cameras, obtain the frequency licenses and have them tested and pasted with a Special Tag before entering the venues.

Special note2: Frequency applications are needed for using wireless routers and other radio transmitting equipment to set up WLAN access point (AP) in the venues. Those equipment can only be brought into the venues after they are issued a frequency license, tested by the designated agency and pasted a Special Tag. Except for special requirement, it is strongly recommended that users access WLAN network provided by Beijing 2022 or by public mobile communication

operators, and the frequency applications for private WLAN APs or hotspots may not be approved.

Special note3: After entering the Olympic venues and special control areas, public mobile communication terminals (mobile phones), wireless internet cards, laptops, and tablet computers shall not be used as wireless LAN hotspots; the Bluetooth function of wearable smart devices such as public mobile communication terminals (mobile phones), camera wireless remote-control devices, smart watches, smart bracelets, Bluetooth headsets, etc. shall be switched off.

Interpretation Services

Beijing 2022 provides volunteer interpretation services for athletes' interviews at the Mixed Zone in the competition venues. Volunteer interpretation services in English will be provided upon request at the Doping Control Stations and Medical Stations, and over-the-phone interpretation in selected languages will be available via My 2022 App.

Professional interpreters provide interpretation services for official press conferences at the Main Media Centre, medal-round press conferences at the competition venues, IOC meetings, Chefs de Mission meetings either in consecutive or simultaneous modes depending on the demands and availability. Professional interpretation covers Chinese, French, Italian, German, Russian, Japanese and Korean using English as the pivot language. Volunteer interpretation, on the other hand, will utilise Chinese as the pivot language. The languages provided through both volunteers and professional interpreters vary by locations and clients and will be determined daily by Beijing 2022 Language Services taking into account the needs of key Olympic stakeholders and other Beijing 2022 Functional Areas.

Doping Control

General Principles

Beijing 2022 is committed to implement the doping control programme with high standard and quality. Under the direction of International Testing Agency (ITA) authorized by IOC, Beijing 2022 will ensure the doping control programme compliant with the World Anti-Doping Code so as to protect clean sports, clean athletes and athletes' right.

The International Testing Agency will develop the Test Distribution Plan and sign protocol with each IF. Samples of doping control will be analyzed according to the 2022 Prohibited List of the World Anti-Doping Agency (WADA) in WADA accredited anti-doping laboratory.

During the Olympic Winter Games, Doping Control Stations will be operating at all competition venues, 3 Olympic Villages and Medals Plazas. Doping Control Stations in the Olympic Villages are close to the Polyclinics.

Beijing 2022's testings start from the opening of the Olympic Village on January 27, 2022 until the closing ceremony on February 20, 2022. Urine and/or blood samples will be collected. Testings include In-Competition and Out-Of-Competition. In-Competition means the period commencing at 11:59 p.m. on the day before a competition in which the athlete is scheduled to participate through the end of such Competition and the sample collection process related to such competition. Out-Of-Competition means anytime that is not In-Competition. Out-Of-Competition testings start on the opening day of the Olympic Village and take place in the Doping Control Station in the Olympic Villages. If an athlete resides outside the Olympic Village, Out-Of-Competition testings may be implemented in the athlete's residence. What's more, some Out-Of-Competition testings may happen in the training venues. In-Competition testings often take place in the Doping Control Stations in competition venues. Athletes receive testings after their competitions. During the Games-time, Doping Control Command Centers will be set up to manage the operation of Doping Control Stations in the Olympic Villages, competition venues and Medals Plazas in 3 competition zones, and report technical issues directly to the ITA.

NOCs are encouraged to conduct anti-doping education sessions with their athletes, athlete support personnel and medical personnel prior to the Games.

NOCs are also encouraged to work with their National Anti-Doping Organization (NADO) and Regional Anti-Doping Organization (RADO) to ensure athletes are tested regularly, out-of-competition prior to the commencement of the Games.

Games-time Operations

Transport after doping control

Beijing 2022 will provide transportation for Athletes and NOC representatives who have undergone doping control from the competition venues to Olympic Villages (including non-shuttle bus hours).

If an athlete resides outside the Olympic Village, NOCs will be the one who is responsible to provide transportation bringing the athlete back to the accommodation.

Victory Ceremony for Athletes who have not completed doping control

If the medalist needs to participate the Victory Ceremony at the Medals Plaza and cannot complete the doping control process at the venue in sufficient time before the Victory Ceremony, he or she will be accompanied by a chaperon or a Doping Control Officer to complete the doping control process in the Doping Control Station at the Medals Plaza.

Interpreters during doping control process

Beijing 2022 will recruit local Doping Control Officers capable of communicating in English and international Doping Control Officers with multiple language skills to meet the language demand for doping control.

Athletes can also bring their designated interpreters, only one interpreter per athlete could have access to the Doping Control Station. The interpreter is allowed to participate the whole Doping Control process except for witnessing the urine sample provision.

In addition, Beijing 2022 can also provide on-site translation services or telephone interpretation services through the game's multilingual call centre when necessary.

Doping control under COVID-19

Beijing 2022 will formulate relevant countermeasures for doping control according to the actual situation of COVID-19 and the policies of IOC, ITA, WADA and Beijing 2022, and implement testings according to *WADA's Guidance for Testing During COVID-19 Pandemic*.

Safety

Safety Concerns

If you encounter safety threats when you are working or participating in activities in Beijing 2022 venues or facilities, please keep the following tips in mind which will be helpful.

- Please take care of your personal identification documents and carry them with you all the time.
- Please show your OIAC at the pass check points and have your personal belongings checked in accordance with the requirements of security screening. You must make sure that no prohibited or restricted item be brought into the venues.
- Dial these numbers when you need help: 110 (police), 119 (fire department), 120 (medical service).
- In case of safety threats, please stop your activities immediately. Do not panic. Please approach any Beijing 2022 staff/security personnel inside the venues or facilities and request their assistance.

Emergency Services

Contingency plans and evacuation procedures have been formulated for each venue of the Beijing 2022 Games in advance, and in case of emergency, the venue team will implement the plans and procedures as planned. What you need to do is to:

- Keep calm and take care of yourself. Choose a safe path to leave the dangerous area.
- Do exactly as you are told by the security personnel or professionals dealing with the emergency.
- Do not gather at the scene of emergency. Do not enter the dangerous area.
- Do not attempt emergency rescue if you have not received professional training.
- In case of any emergency, please approach any Beijing 2022 staff/security personnel inside the venues or facilities to request emergency assistance. You can also directly dial 110 (police), 119 (fire department) and 120 (medical service) to request help.

Security

A unified security coordination and command authority will be established at the national level for the Beijing 2022 Games to ensure the safety and harmony of the Beijing 2022 Games as supported by carefully designed security plans, sufficient human resources, sophisticated equipment and facilities, and efficient working mechanisms.

Access Control to Competition and Non-Competition Venues

Ticket and pass check points, pedestrian and vehicle security screening points will be set at the entry of the venue perimeter. To access the locked-down venues, all pedestrians must present valid tickets and passes and vehicles must present valid passes. The pedestrians and vehicles must go through ticket and/or pass check and security screening before they can enter the perimeter.

Venue Security Perimeters

24-hour security will be provided for competition venues, non-competition venues (excluding airports), and training venues. Pedestrian and vehicle security screening points will be set at the entry of the venue perimeter. To access the locked-down venues, all pedestrians must present valid tickets and passes and vehicles must present valid passes. The pedestrians and vehicles must go through ticket and/or pass check and security screening before they can enter the perimeter. The perimeter of a competition venue is divided into the front yard and the back yard, with the pedestrian and vehicle flows respectively created for different client groups. Security personnel are in place within the perimeters to provide security services for various client groups.

Multiple venues located within the same perimeter form a cluster that will be provided with 24-hour security. For venue clusters such as the venue cluster of Beijing Olympic Park Center Zone, the Capital Stadium Cluster, the venue cluster in Yanqing Competition Zone, the Genting Snow Park Cluster and Guyangshu Cluster, pedestrian and vehicle security screening points will be set at the entry of the cluster perimeter. To access venues in the cluster, all pedestrians must present valid tickets and passes and vehicles must present valid passes. The pedestrians and vehicles must go through ticket and/or pass check and security screening before they can enter the cluster perimeter. Then at each venue within the cluster perimeter, only tickets and passes will be checked and security screening will not be conducted anymore.

Transport and Security

The delegations will be provided with the “clean-to-clean” transport service between the Village Transport and the competition/training venues, which means that the bus that reaches the venue or Village will directly enter the venue security perimeter or Village Transport via the fast check channel (e.g. Express Entry) to park and drop off passengers.

List of Restricted and Prohibited Items

Note: Lists of Prohibited and Restricted Items for the Olympic Village and Olympic Family Hotel are formulated separately.

Legend:

×- Prohibited: Items which are NOT permitted to be brought into venues

○- Permitted: Items which ARE permitted to be brought into venues

R- Restricted: Only indicated items ARE permitted to be brought into venues under certain circumstances

No	Items	Athletes· NOC/NPC	Workforce
1	Firearms, ammunition and explosives	×	×
2	Crossbows, daggers, imitation guns and other controlled tools	×	×
3	Hazardous items that are flammable and explosive, such as fireworks, firecrackers, gasoline, alcohol, etc.	×	×
4	Highly toxic, corrosive, and other hazardous chemicals and radioactive substances	×	×
5	Harmful biologics, infectious disease pathogens and other hazardous substances	×	×
6	Narcotics including heroin, cocaine, marijuana, methamphetamine, etc.	×	×
7	Items prohibited by Chinese laws and regulations	×	×
8	Self-brought alcoholic beverages	×	×
9	Fragile items and different kinds of containers, including but not limited to glass bottles/ glasses, thermos and ice boxes	R Containers for personal use	R Containers for personal use
10	Self-brought beverages (either in flexible or rigid packages) and food	R Appropriate amount	R Appropriate amount for personal consumption
11	Banners, slogans and other propaganda items that carry contents related to political, racial, religious or commercial propaganda and in violation of the <i>Olympic Charter</i> , the <i>IPC Handbook</i> and/or Chinese laws and regulations	×	×

No	Items	Athletes· NOC/NPC	Workforce
12	Means of transport, including but not limited to electric bicycles, motor scooters, bicycles, scooters, self-balancing scooters, skateboards, etc.	<p>R</p> <ul style="list-style-type: none"> · Baby carriages and wheelchairs · Training bicycles carried by the athletes are allowed to be brought into venues after security screening, but must be strictly managed by the carrier's team. 	<p>R</p> <p>Baby carriages and wheelchairs</p>
13	Animals	<p>R</p> <p>Guide dogs</p>	<p>R</p> <p>Guide dogs</p>
14	Musical instruments, including but not limited to common musical instruments, whistles, horns, drums, etc.	<p>R</p> <p>Whistles used for competition or training are allowed to be brought into venues after security screening, but must be strictly managed by the carrier's team.</p>	<p>R</p> <p>For musical instruments and props used by sports show performers, relevant information shall be submitted in advance to the venue security team for record and these items are allowed to be brought into venues after security screening, but must be strictly managed by the carrier's team</p>
15	Clubs, long sticks, sharp objects and other items that are easy to cause injuries, including but not limited to long-handle umbrellas, pointed umbrellas, etc	<p>R</p> <ul style="list-style-type: none"> · Crutches used by people with a mobility impairment · Sports equipment (including but not limited to crampons, snow shovels, electric drills, skis, ski poles, hockey sticks and other necessary tools for venue operation and competition organization) carried by the athletes are allowed to be brought into venues after security screening, but must be strictly managed by the carrier's team. 	<p>R</p> <ul style="list-style-type: none"> · Crutches used by people with a mobility impairment · Sports equipment (including but not limited to crampons, snow shovels, electric drills, skis, ski poles, hockey sticks and other necessary tools for venue operation and competition organization) carried by the personnel of competition organization are allowed to be brought into venues after security screening, but must be strictly managed by the carrier's team.

No	Items	Athletes· NOC/NPC	Workforce
16	Balls, rackets, frisbees and other similar items	R Balls for warm-up activities carried by the athletes are allowed to be brought into venues after security screening, but must be strictly managed by the carrier's team.	×
17	Bags and suitcases, handbags, etc., that are too large in volume to be brought into the seating area	R Not allowed to be brought into the seating area	R Not allowed to be brought into the seating area
18	Flags of non-participating countries or regions of the Beijing 2022 Games; the flags with an expanded area over 2m×1m; flagpoles over 1m in length	×	×
19	Unauthorized professional camera equipment and supports of cameras and video cameras	R Home-use, small hand-held camera equipment	R Home-use, small hand-held camera equipment
20	Unauthorized items that may distract the attention of athletes, technical officials and coaches, that interfere with the electronic signals and cluster signals of the Games and affect the operation of the Games, or that affect people's spectating experience, including but not limited to radios, laser devices and amplification devices	R Authorized radios, laser devices and amplification devices used for competition organization are allowed to be brought into venues after security screening, but must be strictly managed by the carrier's team.	R Authorized radios, laser devices and amplification devices used for competition organization are allowed to be brought into venues after security screening, but must be strictly managed by the carrier's team.

No	Items	Athletes· NOC/NPC	Workforce
21	Radio stations/radio transmitting devices without the dedicated label of “Radio Equipment License” for the Beijing 2022 Games	<p style="text-align: center;">R</p> <ul style="list-style-type: none"> · Public mobile communication terminals (mobile phones) · Embedded WLAN cards in the computers · Laptops, tablet PCs · Remote control keys of vehicles with a power lower than 2mW and the remote control devices of cameras · Devices used by individuals that meet the technical requirements for micropower short-range radio transmitting devices including the biomedical telemetry and medical implants equipment and related supporting equipment · Wearable smart devices such as smart watches, smart bracelets/bands, and bluetooth earphones/headsets 	<p style="text-align: center;">R</p> <ul style="list-style-type: none"> · Public mobile communication terminals (mobile phones) · Embedded WLAN cards in the computers · Laptops, tablet PCs · Remote control keys of vehicles with a power lower than 2mW and the remote control devices of cameras · Devices used by individuals that meet the technical requirements for micropower short-range radio transmitting devices including the biomedical telemetry and medical implants equipment and related supporting equipment · Wearable smart devices such as smart watches, smart bracelets/bands, and bluetooth earphones/headsets
22	Small civil aircraft such as drones and the remote control devices thereof, various types of model aircraft that can lift off and the remote control devices thereof, and airborne objects such as kites and Kongming lanterns	×	×
23	Items that may affect security and violate the <i>Olympic Charter</i> , the <i>IPC Handbook</i> , Chinese laws and regulations or the guideline for spectators on the tickets, such as cigarette lighters, matches, and other ignition tools, syringes, etc	×	×

No	Items	Athletes· NOC/NPC	Workforce
24	Maintenance tools, including but not limited to paper knives, screwdrivers and tool sets, etc.	<p>R</p> <p>The necessary maintenance tools carried by the athletes and team officials are allowed to be brought into venues after security screening, but these items must be strictly managed by the carrier's team.</p>	<p>R</p> <p>The necessary maintenance tools and supplies carried by the venue team technical support personnel, the team maintenance support personnel of delegations and medical personnel are allowed to be brought into venues after security screening, but these items must be strictly managed by the carrier's team.</p>
25	Cosmetics such as mousse and hair gel	<p>R</p> <p>A small amount of necessary cosmetics such as mousse and hair gel carried by the athletes shall be tested by the carriers themselves under the supervision of the security check personnel and then will be allowed to be brought into venues after being confirmed, but these items must be strictly managed by the carrier's team.</p>	<p>R</p> <p>A small amount of necessary cosmetics such as mousse and hair gel carried by the hair and makeup artists of the Victory Ceremony Team during the pre-Games rehearsals and the Games-time and by the sports show performers shall be tested by the carriers themselves under the supervision of the security check personnel and then will be allowed to be brought into venues after being confirmed, but these items must be strictly managed by the carrier's team.</p>
26	Sanitizing gels and alcohol pads for personal use	<p>R</p> <p>Small amount, sanitizing gels up to 100ml</p>	<p>R</p> <p>Small amount, sanitizing gels up to 100ml</p>

*Please cooperate if the SEC FA of Beijing 2022 requests additional security check.

Medical Services

General Aspects

Under the supervision of the Medical Commission of the International Olympic Committee (IOC MC), and in accordance with the stipulation of the *Olympic Charter*, Beijing 2022 has developed a comprehensive and integrated healthcare programme for all constituents of the Olympic Games.

Medical services will be provided in the following:

- Athlete Medical Stations at all competition and training venues, arranged in accordance with the IOC requirements and each International Federation's (IF) requirements.
- Polyclinics in the Beijing Olympic Village, the Yanqing Olympic Village and the Zhangjiakou Olympic Village.
- Designated hospitals for athletes and Olympic Family Members.
- Medical facilities accessible for spectators, Olympic Family Members, ticketed spectators, media and the workforce at all competition venues and non-competition venues.

Medical Services at the Venues

Beijing 2022 will provide medical services at all competition, training and official non-competition venues in accordance with the relevant IFs.

Venue medical services consist of Athlete Medical Stations, Field of Play (FOP) Medical Stations, Spectator Medical Stations. Each venue will be covered by Emergency Medical Services. In the Yanqing National Alpine Skiing Centre (YAS), there are 22 FOP Medical Stations, 3 Athlete Medical Stations, 2 Spectator Medical Stations and 8 ambulances.

Athletes injured on the FOP will be evaluated on-site by professional medical workers depending on the venue and according to the relevant IFs requirements. If necessary, the athlete will be evacuated from the FOP and transported to the Athlete Medical Station, designated hospitals or other facilities, as appropriate. Helicopter Emergency Medical Services will be available when required by the IFs rules.

NOC medical personnel are advised to attend a meeting with the relevant venue medical officer/venue medical supervisor during the first few days of the official training to establish the procedures, roles and responsibilities of the personnel.

Polyclinics

Polyclinics will be located in the Residential Zone of each Village, and will offer medical services to accredited Athletes and Team Officials from January 27 to February 23, 2022. Services will be limited during the Villages' pre-opening period from January 23 to 26, and from February 23 to 25, 2022.

The Olympic Village Polyclinics will offer the following services 24 hours a day: emergency services, laboratory and pharmacy.

During the time from 07:00 to 23:00, Polyclinic will work as a medical facility and provide Internal medicine (cardiology, neurology, pulmonology, gastroenterology, endocrinology, nephrology), Surgery (orthopedics, neurosurgery, general surgery), gynaecology, rehabilitation, physiotherapy and traditional Chinese Medicine upon request.

Olympic Hospitals

If a patient requires in-patient treatment or any services above and beyond that which is provided in the Athlete Medical Stations or Polyclinics, he/she will be transferred by ambulance to the nearest designated hospital.

A total of 41 designated hospitals have been identified in Beijing 2022 to provide diagnosis and treatment services for all kinds of Olympic stakeholders.

Emergency Medical Services and Transport

During the Games, Beijing 2022 will coordinate all emergency transport services. The venue Medical Officer will be responsible for choosing the type of transport needed, depending on the type of injury or illness, weather and road conditions and the proximity to the hospitals.

All ambulances are staffed by two paramedics and equipped with emergency rescue equipment. Spare vehicles will be provided at each Medical Station to ensure that vehicles dispatched from the site could be replaced in a timely manner. The integrated dispatch center will coordinate the positioning and rotation of other ambulances if necessary.

Ambulances dedicated to Olympic venues will not be used for medical services outside such venues, except when local healthcare resources are not sufficient enough to handle mass casualties in the event of an accident or a natural disaster.

Interpretation Services

All individuals needing medical assistance have access to interpretation services at all Olympic venues.

Public Health

Public health services including, but not limited to, disease surveillance, communicable disease control, emergency health management and hygiene management will be in place throughout the regions where the Games are being held. Consistent public health surveillance will include the monitoring of infectious and communicable diseases, regular sanitary inspections and testing for water and air quality control. A healthy lifestyle promotion and no-smoking policy programme will be in place.

The Olympic Winter Games Beijing 2022 will be a smoking-free Games. Smoking and tobacco consumption in any form, including e-cigarettes, will be prohibited within all venues of Beijing 2022.

Ceremonies

Opening and Closing Ceremonies

The Opening Ceremony will be held on February 4, 2022 and the Closing Ceremony on February 20, 2022. Both ceremonies will take place at the National Stadium in the Beijing Olympic Green. The National Stadium has a roof, but it's not completely covered. The average daily temperature and daily air velocity in Beijing Olympic Green during the Opening and Closing Ceremonies in February are as follow:

	Opening Ceremony	Closing Ceremony
Average Daily Temperature	-0.3°C	2.8°C
Average Daily Air Velocity	1.8m/s	1.4m/s

Victory Ceremonies

Please refer to the Victory Ceremonies Schedule and the Competition Schedule at the end of this manual for current information on the dates, times and locations of the Beijing 2022 Venue and Victory Ceremonies.

The venue broadcasting of Victory Ceremony will be in English, French and Chinese.

Victory Ceremonies

Victory Ceremonies will take place in the competition venue, immediately following the completion of the medal event. Medalists will receive a medal and a gift. The flags of the medalists will be raised, and the gold medal team's national anthem will be played.

Medal Boxes and Diplomas

The Medal Box of the Medalists and the Diplomas of the top eight winning athletes will be sent to the NOC Service Centre of the Olympic Villages in 24 hours after the Victory Ceremony every day. NOCs can collect them in the NOC Service Centre.

Mixed Zone and Press Conferences

General Principles for Interview Facilities

The OCOG provides designated areas at all competition venues and the Olympic Village in which media organisations may interview Athletes and Officials.

At each competition venue these interview facilities include a Mixed Zone in which athletes may be interviewed as soon as they leave the FOP. A press conference area is also available at each competition venue and the Olympic Village.

The location and smooth running of these facilities is an important element in the success of the Games coverage.

IFs and NOCs provide all the necessary assistance to the IOC, the OCOG and OBS in the mutual interests of all the partners concerned.

The final location, layout, policies and procedures for the management and operation of all Mixed Zones are agreed by OBS and Press Operations in cooperation with Sport and the Venue Media Team and approved by the IOC.

Mixed Zone Operations

Mixed Zone General Principles

- An effective Mixed Zone is vital in providing Games-time operations for athletes and the media.
- In the Mixed Zone, the media are expected to be courteous to athletes experiencing extremes of emotion or fatigue following their competitions, while the athletes are expected to respect that the media have an important role to play in publicising their achievements and their sport.
- All athletes must pass through the Mixed Zone when leaving the Field of Play. They are encouraged to participate in interviews, however they are not obliged to answer questions or participate in interviews if they do not wish to do so. Athletes must keep two metres from the Media at all times in the mixed zone.
- Mixed Zone will be operational during all training sessions in the competition venues. The practice venues will operate under the same rules as during the competitions, that is, athletes must leave the Field of Play through the Mixed Zone but are not obliged to talk with the media.
- The IOC requests that the Beijing 2022 Organizing Committee, IFs and NOCs provide all the necessary assistance to ensure the smooth operation of the Mixed Zone.

Mixed Zone Management

- Beijing 2022 Sport FA is responsible for escorting athletes from the Field of Play to the entrance of the broadcast Mixed Zone, but not through the Mixed Zone.
- OBS and Press Operations are responsible for escorting athletes through their respective sections of the Mixed Zone.
- OBS is responsible for the Rights Holding Broadcasters' section of the Mixed Zone. Beijing 2022 Press Operations is responsible for the Press section of the Mixed Zone.
- Only those with an operational role in the Mixed Zone i.e., competing athletes, media, OBS, Mixed Zone supervisors, doping control, OIS flash quote reporters, IOC media operations, registered NOC press attachés and others are permitted into their respective areas of the Mixed Zone.
- Coaches of non-team sports, managers and/or individual athletes' agents, security, and volunteers are not permitted in any area of the Mixed Zone.

Press Conferences Operations

Press Conferences

After each final event the medalists attend a venue press conference. Coaches and/or other athletes may also attend press conferences as circumstances dictate.

- Press Operations staff are responsible for conducting all press conferences at the competition venues. The press conference should occur as soon as possible after the end of the competition to help the media to meet their deadlines. This should not, however, interfere with normal Mixed Zone operations and timing should be adjusted accordingly to ensure this.
- Additional sports press conferences may be held at other times during the competitions at the discretion of the venue press manager and the NOC and/or IF media officer, who will jointly decide which athletes and coaches should attend.
- Professional interpretation services (simultaneous or consecutive) are provided for all press conferences.

Policy for COVID-19 Countermeasures

The Beijing 2022 Playbook is the basis of the game plan to ensure that all Olympic Winter Games participants and the people of China stay safe and healthy for the Games. It has been developed jointly by the Beijing 2022 and the IOC in close collaboration with the Chinese Government and relevant authorities.

Please refer to the Version 2 of *The Beijing 2022 Playbook* published on the official website of Beijing 2022 to acknowledge detailed policy on the Principles and COVID-19 Countermeasures for the Athletes and Team Officials:

<https://www.beijing2022.cn/sv1/wog.html?cmsid=20211213005851>

The Competition Continuity Contingency Plan will be updated to NOCs when confirmed by the IOC.

Appendix



Beijing 2022 Olympic Winter Games Competition Schedule Version 12

BEIJING 2022		Beijing 2022 Olympic Winter Games Competition Schedule Version 12																			BEIJING 2022	
Sport / Discipline	Day -2	Day -1	Day 0	Day 1	Day 2	Day 3	Day 4	Day 5	Day 6	Day 7	Day 8	Day 9	Day 10	Day 11	Day 12	Day 13	Day 14	Day 15	Day 16	Medals		
	Wednesday 02 Feb.	Thursday 03 Feb.	Friday 04 Feb.	Saturday 05 Feb.	Sunday 06 Feb.	Monday 07 Feb.	Tuesday 08 Feb.	Wednesday 09 Feb.	Thursday 10 Feb.	Friday 11 Feb.	Saturday 12 Feb.	Sunday 13 Feb.	Monday 14 Feb.	Tuesday 15 Feb.	Wednesday 16 Feb.	Thursday 17 Feb.	Friday 18 Feb.	Saturday 19 Feb.	Sunday 20 Feb.			
National Stadium			Opening Ceremony																	Closing Ceremony		
National Indoor Stadium																						
Wukesong Sports Centre																						
National Speed Skating Oval																						
Capital Indoor Stadium																						
National Aquatics Centre																						
Big Air Shougang																						
Yanqing National Alpine Skiing Centre																						
Yanqing National Sliding Centre																						
Zhangjiakou National Ski Jumping Centre																						
Zhangjiakou National Cross-Country Skiing Centre																						
Zhangjiakou National Biathlon Centre																						
Zhangjiakou Genting Snow Park																						

Note: all information in this schedule is subject to change.

Beijing 2022 Olympic Winter Games Training Schedule

Beijing 2022 Olympic Winter Games Training Schedule



Alpine Skiing (ALP)

Downhill(DH,M/W); Super G(SG,M/W); Alpine Combined(AC,M/W); Giant Slalom(GS,M/W); Slalom(SL,M/W); Team Event(TE,M/W)

Yanqing National Alpine Skiing Center



		6:00	6:30	7:00	7:30	8:00	8:30	9:00	9:30	10:00	10:30	11:00	11:30	12:00	12:30	13:00	13:30	14:00	14:30	15:00	15:30	16:00	16:30	17:00	17:30	18:00	18:30	19:00	19:30	20:00	20:30	21:00	21:30	22:00	22:30	23:00	23:30							
Day -8	Thu, Jan 27					General Training session 1 8:00 - 10:30					General Training session 2 10:30 - 13:00					General Training session 3 13:00 - 15:30																												
Day -7	Fri, Jan 28					General Training session 1 8:00 - 10:30					General Training session 2 10:30 - 13:00					General Training session 3 13:00 - 15:30																												
Day -6	Sat, Jan 29					General Training session 1 8:00 - 10:30					General Training session 2 10:30 - 13:00					General Training session 3 13:00 - 15:30																												
Day -5	Sun, Jan 30					General Training session 1 8:00 - 10:30					General Training session 2 10:30 - 13:00					General Training session 3 13:00 - 15:30																												
Day -4	Mon, Jan 31					General Training session 1 8:00 - 10:30					General Training session 2 10:30 - 13:00					General Training session 3 13:00 - 15:30																												
Day -3	Tue, Feb 1					General Training session 1 8:00 - 10:30					General Training session 2 10:30 - 13:00					General Training session 3 13:00 - 15:30																												
Day -2	Wed, Feb 2					General Training session 1 8:00 - 10:30					General Training session 2 10:30 - 13:00					General Training session 3 13:00 - 15:30																												
Day -1	Thu, Feb 3											Official Training M Downhill 11:00-13:45																																
Day -1	Thu, Feb 3					General Training session 1 8:00 - 10:30					General Training session 2 10:30 - 13:00					General Training session 3 13:00 - 15:30																												
Day 0	Fri, Feb 4											Official Training M Downhill 11:00-13:45																																
Day 0	Fri, Feb 4					General Training session 1 8:00 - 10:30					General Training session 2 10:30 - 13:00					General Training session 3 13:00 - 15:30																												
Day 1	Sat, Feb 5											Official Training M Downhill 11:00-13:45																																
Day 1	Sat, Feb 5					General Training session 1 8:00 - 10:30					General Training session 2 10:30 - 13:00					General Training session 3 13:00 - 15:30																												
Day 2	Sun, Feb 6											M Downhill 11:00-13:10																																
Day 2	Sun, Feb 6										Free Ski W GS (TBD) 10:00-11:00																																	
Day 2	Sun, Feb 6					General Training session 1 8:00 - 10:30					General Training session 2 10:30 - 13:00					General Training session 3 13:00 - 15:30																												
Day 3	Mon, Feb 7											Free Ski M SG (TBD) 11:00-12:00																																
Day 3	Mon, Feb 7										W Giant Slalom 10:15-11:55							W Giant Slalom 13:45-15:50																										
Day 3	Mon, Feb 7					General Training session 1 8:00 - 10:30					General Training session 2 10:30 - 13:00					General Training session 3 13:00 - 15:30																												
Day 4	Tue, Feb 8											M Super-G 11:00-13:25																																
Day 4	Tue, Feb 8											Free Ski W SL (TBD) 10:15-11:15																																
Day 4	Tue, Feb 8					General Training session 1 8:00 - 10:30					General Training session 2 10:30 - 13:00					General Training session 3 13:00 - 15:30																												
Day 5	Wed, Feb 9											Official Training M Downhill 10:30-13:10																																
Day 5	Wed, Feb 9											W Slalom 10:15-11:50						W Slalom 13:45-15:40																										
Day 5	Wed, Feb 9					General Training session 1 8:00 - 10:30					General Training session 2 10:30 - 13:00					General Training session 3 13:00 - 15:30																												
Day 6	Thu, Feb 10																Free Ski W SG (TBD) 13:00-14:00																											
Day 6	Thu, Feb 10											M Alpine Combined (DH) 10:30-12:45								M Alpine Combined (SL) 14:15-16:10																								
Day 6	Thu, Feb 10					General Training session 1 8:00 - 10:30					General Training session 2 10:30 - 13:00					General Training session 3 13:00 - 15:30																												
Day 7	Fri, Feb 11											W Super-G 11:00-13:20																																

Day7	Fri. Feb 11		General Training session1 8:00 - 10:30	General Trainingsession2 10:30 - 13:00	General Training session3 13:00 - 15:30																
Day8	Sat. Feb 12				Official Training W Downhill 11:00-13:10																
Day8	Sat. Feb 12				Free Ski M GS (TBD) 10:15-11:15																
Day8	Sat. Feb 12		General Training session1 8:00 - 10:30	General Trainingsession2 10:30 - 13:00	General Training session3 13:00 - 15:30																
Day9	Sun. Feb 13				Official Training W Downhill 11:00-13:10																
Day9	Sun. Feb 13			M Giant Slalom 10:15-12:15		M Giant Slalom 13:45-16:00															
Day9	Sun. Feb 13		General Training session1 8:00 - 10:30	General Trainingsession2 10:30 - 13:00	General Training session3 13:00 - 15:30																
Day10	Mon. Feb 14				Official Training W Downhill 11:00-13:10																
Day10	Mon. Feb 14		General Training session1 8:00 - 10:30	General Trainingsession2 10:30 - 13:00	General Training session3 13:00 - 15:30																
Day11	Tue. Feb 15				W Downhill 11:00-13:10																
Day11	Tue. Feb 15				Free Ski M SL (TBD) 10:15-11:15																
Day11	Tue. Feb 15		General Training session1 8:00 - 10:30	General Trainingsession2 10:30 - 13:00	General Training session3 13:00 - 15:30																
Day12	Wed. Feb 16				Official Training W Downhill 10:30-12:00																
Day12	Wed. Feb 16			M Slalom 10:15-12:10		M Slalom 13:45-15:50															
Day12	Wed. Feb 16		General Training session1 8:00 - 10:30	General Trainingsession2 10:30 - 13:00	General Training session3 13:00 - 15:30																
Day13	Thu. Feb 17				W Alpine Combined (DH) 10:30-12:00		W Alpine Combined (SL) 14:00-15:30														
Day13	Thu. Feb 17		General Training session1 8:00 - 10:30	General Trainingsession2 10:30 - 13:00	General Training session3 13:00 - 15:30																
Day14	Thu. Feb 18																				
Day14	Thu. Feb 18		General Training session1 8:00 - 10:30	General Trainingsession2 10:30 - 13:00	General Training session3 13:00 - 15:30																
Day15	Thu. Feb 19				Team Event 11:00-13:10																
Day15	Thu. Feb 19		General Training session1 8:00 - 10:30	General Trainingsession2 10:30 - 13:00	General Training session3 13:00 - 15:30																
Day16	Thu. Feb 20																				
Day16	Thu. Feb 20		General Training session1 8:00 - 10:30	General Trainingsession2 10:30 - 13:00	General Training session3 13:00 - 15:30																

Competition and training times are subject to change.(GMT+8) 10:00, Friday - (CET) 03:00, Friday - (EST, USA) 21:00, Thursday. General Training on Training Course (Course F , E1 , G2 , D3)
Training Schedule is subject to change according to weather conditions and information will be made through connction coaches man/woman respectively.

	Competition		Official Training		General Training		Free ski		Medal Event
--	-------------	--	-------------------	--	------------------	--	----------	--	-------------

Beijing 2022 Olympic Winter Games Victory Ceremonies Schedule

Beijing 2022 Olympic Winter Games - Victory Ceremonies Schedule - Nov.25.2021 KEY: ■ = Next Day ▲ = Same Day ■ = 2 Days Later																				
Venue	Sport / Discipline	Zone	Day 1 Saturday Feb. 05	Day 2 Sunday Feb. 06	Day 3 Monday Feb. 07	Day 4 Tuesday Feb. 08	Day 5 Wednesday Feb. 09	Day 6 Thursday Feb. 10	Day 7 Friday Feb. 11	Day 8 Saturday Feb. 12	Day 9 Sunday Feb. 13	Day 10 Monday Feb. 14	Day 11 Tuesday Feb. 15	Day 12 Wednesday Feb. 16	Day 13 Thursday Feb. 17	Day 14 Friday Feb. 18	Day 15 Saturday Feb. 19	Day 16 Sunday Feb. 20		
Beijing National Stadium	Various Sports	Beijing Zone	2																	
			2																	
			4																	
			2																	
Beijing National Stadium	Various Sports	Beijing Zone	0																	
			0																	
			0																	
			0																	
Beijing National Stadium	Various Sports	Beijing Zone	7																	
			5																	
			5																	
			6																	
Beijing National Stadium	Various Sports	Beijing Zone	0																	
			0																	
			0																	
			0																	
Beijing National Stadium	Various Sports	Beijing Zone	7																	
			5																	
			5																	
			6																	
Beijing National Stadium	Various Sports	Beijing Zone	0																	
			0																	
			0																	
			0																	
Beijing National Stadium	Various Sports	Beijing Zone	7																	
			5																	
			5																	
			6																	
Beijing National Stadium	Various Sports	Beijing Zone	0																	
			0																	
			0																	
			0																	
Beijing National Stadium	Various Sports	Beijing Zone	7																	
			5																	
			5																	
			6																	

KEY: ■ = Next Day ▲ = Same Day ■ = 2 Days Later ■ = Venue Victory Ceremonies
 ISSUES
 Closing Ceremonies: Transport timing to be worked out for Cross Country Women's 30K Mass Start

Late Athlete Replacement Policy for the Olympic Winter Games Beijing 2022



IOC Joint Policy

1. Key information					
Title	Late Athlete Replacement (LAR)	Version Date	4.1 24/08/2021	Classification	Joint Policy
IOC owner	Irina GLADKIKH, Associate Director, Winter and Recognised Sports and IF Relations				
IOC sign-off	Kit McCONNELL, Sports Director				
Effective dates	From 24 January 2022 23:59 Beijing time (GMT+8) and up to relevant sport/discipline/event Technical Meeting/first Team Captains' Meeting for the related discipline.				
2. Policy impact					
Impacted stakeholder groups	Athletes and National Olympic Committee delegations (NOC), International Olympic Committee (IOC), International Federations (IF)				
Impacted OCOG Functional Areas (FA)	Accreditation, NOC Services, Sport (Sport Entries), Villages Management				
Impacted IOC departments	Medical, NOC Relations, Sports				
3. Policy overview					
Description	<p>This policy applies to athletes of NOCs attending the Olympic Winter Games Beijing 2022.</p> <p>The deadline for the Final Entries list of participating athletes in the Olympic Winter Games Beijing 2022 (sport entries deadline) is 24 January 2022 23:59 Beijing time (GMT+8).</p> <p>After the sport entries deadline, where there are medical conditions preventing participation of an athlete, proven Anti-Doping Rule Violation (ADRV), a positive COVID-19 test, isolation or quarantine due to a COVID-19 infection or other exceptional reasons, the IOC, after consultation with the relevant IF and IOC medical experts (when deemed appropriate by the IOC), may authorise a permanent replacement of an athlete by another athlete only in the same sport and discipline and event. Late Athlete Replacement may only occur up to the relevant sport/discipline/event Technical Meeting/first Team Captains' Meeting for the related discipline, unless otherwise stated in Discipline Specific Implementation (DSI) (see Annex).</p> <p>This policy is only applicable for those sports/disciplines where the quota place has been allocated to the NOC and not to an athlete by name.</p> <p>An LAR is possible only provided that:</p> <ul style="list-style-type: none"> (i) The replacement athlete meets the eligibility conditions and qualification criteria to take part in the Olympic Winter Games Beijing 2022, as stipulated in the "Qualification System for XXIV Olympic Winter Games, Beijing2022", per sport/disciplines published in 2019, and regularly updated by the IOC on NOCnet, the IOC Extranet for NOCs, in the Games Preparation section; (ii) The replacement athlete has adhered to all guidelines regarding COVID 19 countermeasures as per Beijing 2022 policy. 				

IOC Policy: Late Athlete Replacement (LAR)

Page 1/3



IOC Joint Policy

	<p>(iii) The NOC of the replacement athlete had applied successfully for accreditation for the athlete prior to the application deadline, and thus, the replacement athlete has been registered by Beijing 2022 in the "NOC's Athlete Accreditation Long List"; and</p> <p>(iv) No doping control issues are pending concerning the replacement athlete.</p> <p>In addition, the steps outlined below must be followed and the required forms submitted within the timeframe stated in this policy:</p> <p>(v) The "Late Athlete Replacement Form" and "Sport Entry Form" must be completed and a valid medical certificate and supporting document for the replaced athlete must be submitted by the relevant NOC, for the athlete being replaced and the replacement athlete using the e-LAR tool in the Sport Entries System (SEQ);</p> <p>(vi) The "Conditions of Participation" including the "Parental/Legal Guardian Acknowledgement of Consent for Minors" form (if applicable) must be completed and submitted by the relevant NOC for the replacement athlete. The NOC must submit a scanned copy of the "Conditions of Participation" electronically and bring the original, signed and stamped to the Accreditation Centre in the Olympic Village Team Processing Centre.</p> <p>The IOC and the relevant IF may make an LAR, subject to their joint consent and at their discretion.</p> <p>The latest a LAR may occur and must be completed is no later than the first Technical Meeting/Team Captains' Meeting for the respective sport/discipline. This is subject to the deadlines outlined in the DSI (see Annex).</p> <p>Alternate athletes (Ap) As per the "Accreditation at the Olympic Games – Detailed specifications" NOCs can activate an alternate athlete (Ap) in the following discipline: Bobsleigh.</p> <p>The Ap athlete needs to be identified at the time of the Delegation Registration Meeting (DRM) but an NOC can replace the athlete prior to the deadline of Bobsleigh, set out in the DSI.</p> <p>Before the sport-specific deadlines set in the LAR procedures, the NOCs also have the possibility to activate their alternate athletes or to use a replacement from the long list and be in a position to appoint another Ap athlete.</p> <p>Once competition has started, the activation of the Ap athlete has to follow the e-LAR process as above and according to the process stipulated in the LAR procedures.</p> <p>All documentation and queries regarding the LAR should be addressed to Beijing 2022 Sports Entries through the e-LAR tool or in person at the Sport Entries Office in the Beijing Olympic Village Team Processing Centre.</p> <p>Applications with missing information will not be processed.</p> <p>This policy is subject to further change by the IOC for exceptional circumstances.</p>
Exclusions	Not applicable
Related policies	Late Reallocation



IOC Joint Policy

4. Additional information	
Acronym	Definition
ADRV	Anti-Doping Rule Violation
DRM	Delegation Registration Meeting
DSI	Discipline Specific Implementation
FA	Functional Area
IF	International Federation
IOC	International Olympic Committee
LAR	Late Athlete Replacement
NOC	National Olympic Committee
OCOG	Organising Committee for the Olympic Games
SEQ	Sport Entries and Qualification System
TPC	Team Processing Centre

Annex: Discipline Specific Implementation (DSI)

Olympic Winter Games Beijing 2022

Late Athlete Replacement (LAR)

Appendix: Discipline Specific Implementation (DSI)

13 Dec. 2021



Provisions

- Please note that LARs must be concluded by the respective deadline. Please allow sufficient time as it may take up to 24 hours to process a LAR.
- The date and time are subject to change. It will be updated if there is any change.
- This Appendix along with the Late Athlete Replacement policy are published on the Beijing 2022 extranet on the IOC NOCnet and it will be updated whenever necessary.

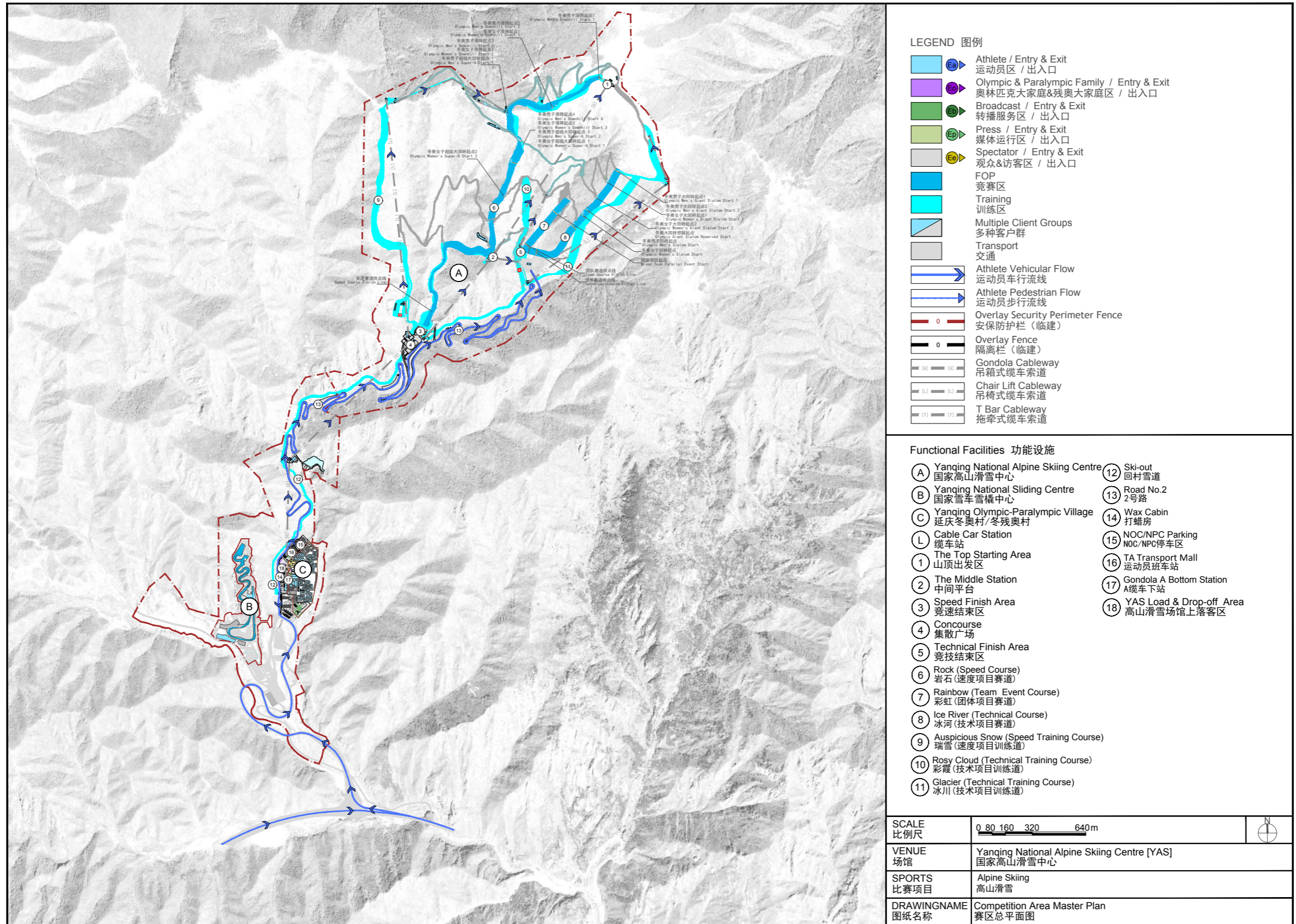
Discipline	Event	Date and Time of Start of Competition	Date and Time of Technical /Draw/Confirmation Meeting	LAR Process Deadline	Details regarding LAR Deadline
Alpine Skiing	Men's Downhill	06 Feb. 2022, 11:15	05 Feb. 2022, 17:00	04 Feb. 2022, 16:00	The LAR process must be completed at least 1 hour before the Team Captains' meeting in which the draw for that event will be held. Exception, for downhill and Alpine Combined event, it's 1 hour before the last training TCM.
	Women's Giant Slalom	07 Feb. 2022, 10:00	06 Feb. 2022, 17:00	06 Feb. 2022, 16:00	
	Men's Super-G	08 Feb. 2022, 11:00	07 Feb. 2022, 17:00	07 Feb. 2022, 16:00	
	Women's Slalom	09 Feb. 2022, 10:15	08 Feb. 2022, 17:00	08 Feb. 2022, 16:00	
	Men's Alpine Combined	10 Feb. 2022, 10:30	09 Feb. 2022, 18:30	08 Feb. 2022, 17:30	
	Women's Super-G	11 Feb. 2022, 11:00	10 Feb. 2022, 17:00	10 Feb. 2022, 16:00	
	Men's Giant Slalom	13 Feb. 2022, 10:15	12 Feb. 2022, 18:30	12 Feb. 2022, 17:30	
	Women's Downhill	15 Feb. 2022, 11:00	14 Feb. 2022, 17:00	13 Feb. 2022, 16:00	
	Men's Slalom	16 Feb. 2022, 10:15	15 Feb. 2022, 17:00	15 Feb. 2022, 16:00	
	Women's Alpine Combined	17 Feb. 2022, 10:30	16 Feb. 2022, 17:00	15 Feb. 2022, 16:00	
	Mixed Team Event	19 Feb. 2022, 11:00	18 Feb. 2022, 17:00	18 Feb. 2022, 16:00	
	Snowboard	Women's Slopestyle	05 Feb. 2022, 10:45	04 Feb. 2022, 14:00	
Men's Slopestyle		06 Feb. 2022, 12:30	05 Feb. 2022, 16:00	05 Feb. 2022, 15:00	
Women's Big Air		14 Feb. 2022, 09:30	13 Feb. 2022, 16:00	04 Feb. 2022, 13:00	
Men's Snowboard Big Air		14 Feb. 2022, 13:30		05 Feb. 2022, 15:00	
Women's Parallel Giant Slalom		08 Feb. 2022, 10:40	07 Feb. 2022, 17:00	07 Feb. 2022, 16:00	
Men's Parallel Giant Slalom		08 Feb. 2022, 10:40			
Women's Halfpipe		09 Feb. 2022, 09:30			
Men's Halfpipe		09 Feb. 2022, 12:30	08 Feb. 2022, 15:30	08 Feb. 2022, 14:30	
Women's Cross		09 Feb. 2022, 11:00	08 Feb. 2022, 16:00	07 Feb. 2022, 15:00	
Men's Cross		10 Feb. 2022, 11:15	09 Feb. 2022, 18:00	08 Feb. 2022, 15:00	
Cross Mixed Team		12 Feb. 2022, 10:00	11 Feb. 2022, 16:00	11 Feb. 2022, 15:00	
Freestyle Skiing		Women's Moguls	03 Feb. 2022, 18:00		03 Feb. 2022, 13:00
	Men's Moguls	03 Feb. 2022, 19:45	03 Feb. 2022, 14:00		
	Women's Big Air	07 Feb. 2022, 09:30			
	Men's Big Air	07 Feb. 2022, 13:30	06 Feb. 2022, 16:00	06 Feb. 2022, 15:00	
	Women's Slopestyle	13 Feb. 2022, 10:00			
	Men's Slopestyle	14 Feb. 2022, 12:30			
	Aerials Mixed Team	10 Feb. 2022, 19:00			
	Women's Aerials	13 Feb. 2022, 19:00	10 Feb. 2022, 12:00	10 Feb. 2022, 11:00	
	Men's Aerials	15 Feb. 2022, 19:00			
	Women's Ski Cross	17 Feb. 2022, 19:30	16 Feb. 2022, 16:00	15 Feb. 2022, 15:00	
	Men's Ski Cross	18 Feb. 2022, 19:00	17 Feb. 2022, 18:00	16 Feb. 2022, 15:00	
	Women's Halfpipe	17 Feb. 2022, 09:30	16 Feb. 2022, 15:30	16 Feb. 2022, 14:30	
Ski Jumping	Women's Normal Hill Individual	05 Feb. 2022, 18:45	03 Feb. 2022, 11:00	03 Feb. 2022, 10:00	The LAR process must be completed at least 1 hour before production of the start list for the qualification or the first round of the respective event.
	Men's Normal Hill Individual	05 Feb. 2022, 14:20	03 Feb. 2022, 12:00	03 Feb. 2022, 11:00	
	Mixed Team	07 Feb. 2022, 19:45	06 Feb. 2022, 21:00	06 Feb. 2022, 20:00	
	Men's Large Hill Individual	11 Feb. 2022, 19:00	10 Feb. 2022, 20:45	10 Feb. 2022, 19:45	
	Men's Team	14 Feb. 2022, 19:00	13 Feb. 2022, 21:15	13 Feb. 2022, 20:15	
	Individual Gundersen NH /10km	09 Feb. 2022, 16:00	08 Feb. 2022, 20:30	08 Feb. 2022, 19:30	
Nordic Combined	Individual Gundersen LH /10km	15 Feb. 2022, 16:00	14 Feb. 2022, 20:00	14 Feb. 2022, 19:00	The LAR process must be completed at least 1 hour before production of the start list for the Ski Jumping competition round for the respective event.
	Team Gundersen LH /4x5km	17 Feb. 2022, 16:00	16 Feb. 2022, 20:00	16 Feb. 2022, 19:00	
	Women's 7.5km + 7.5km Skiathlon	05 Feb. 2022, 15:45	04 Feb. 2022, 18:30	04 Feb. 2022, 17:30	
	Men's 15km + 15km Skiathlon	06 Feb. 2022, 15:00	05 Feb. 2022, 18:30	05 Feb. 2022, 17:30	
	Men's Sprint Free	08 Feb. 2022, 16:00			
	Women's Sprint Free	08 Feb. 2022, 16:00	07 Feb. 2022, 18:30	07 Feb. 2022, 17:30	
	Women's 10km Classic	10 Feb. 2022, 15:00	09 Feb. 2022, 18:30	09 Feb. 2022, 17:30	
	Men's 15km Classic	11 Feb. 2022, 15:00	10 Feb. 2022, 18:30	10 Feb. 2022, 17:30	
	Women's 4x5km Relay	12 Feb. 2022, 15:30	N/A	N/A	
	Men's 4x10km Relay	13 Feb. 2022, 15:00	N/A	N/A	
	Men's Team Sprint Classic	16 Feb. 2022, 17:00	N/A	N/A	
	Women's Team Sprint Classic	16 Feb. 2022, 17:00	N/A	N/A	
Cross-Country Skiing	Men's 50km Mass Start Free	19 Feb. 2022, 14:00	18 Feb. 2022, 18:30	18 Feb. 2022, 17:30	The LAR process must be completed at least 1 hour before the Team Captains' meeting in which the draw for that event will be held.
	Women's 30km Mass Start Free	20 Feb. 2022, 15:00	19 Feb. 2022, 18:30	19 Feb. 2022, 17:30	
	2x6km W + 2x6km M Mixed Relay	05 Feb. 2022, 17:00	04 Feb. 2022, 18:00	04 Feb. 2022, 17:30	
	Women's 15km Individual	07 Feb. 2022, 17:00	06 Feb. 2022, 20:00	06 Feb. 2022, 19:30	
	Men's 20km Individual	08 Feb. 2022, 16:30	07 Feb. 2022, 20:00	07 Feb. 2022, 19:30	
	Women's 7.5km Sprint	11 Feb. 2022, 17:00	10 Feb. 2022, 19:30	10 Feb. 2022, 19:00	
	Men's 10km Sprint	12 Feb. 2022, 17:00	11 Feb. 2022, 19:30	11 Feb. 2022, 19:00	
	Women's 10km Pursuit	13 Feb. 2022, 17:00	N/A	N/A	
	Men's 12.5km Pursuit	13 Feb. 2022, 18:45	N/A	N/A	
	Men's 4x7.5km Relay	15 Feb. 2022, 17:00	14 Feb. 2022, 19:45	14 Feb. 2022, 19:15	
	Women's 4x6km Relay	16 Feb. 2022, 15:45	15 Feb. 2022, 19:15	15 Feb. 2022, 18:45	
	Men's 15km Mass Start	18 Feb. 2022, 17:00	N/A	N/A	
Women's 12.5km Mass Start	19 Feb. 2022, 17:00	N/A	N/A		
Bobsleigh	Women's Monobob	13 Feb. 2022, 09:30			The LAR process must be completed before the Draw for training of the respective event. For replacement of an Ap athlete the same deadlines apply. Further to the deadlines, only Ap athletes may be used for breakman/breakwoman replacement during training as well as competition for medical reasons.
	2-Man Bobsleigh	14 Feb. 2022, 20:05	09 Feb. 2022, 09:00	09 Feb. 2022, 09:00	
	2-Woman Bobsleigh	18 Feb. 2022, 20:00			
	4-Man Bobsleigh	19 Feb. 2022, 09:30	12 Feb. 2022, 15:45	12 Feb. 2022, 15:45	
Skeleton	Men's Skeleton	10 Feb. 2022, 09:30	06 Feb. 2022, 14:30	06 Feb. 2022, 14:30	The LAR process must be completed before the Draw for training of the respective event.
	Women's Skeleton	11 Feb. 2022, 09:30			

Discipline	Event	Date and Time of Start of Competition	Date and Time of Technical /Draw/Confirmation Meeting	LAR Process Deadline	Details regarding LAR Deadline		
Luge	Men's Singles	05 Feb. 2022, 19:10	31 Jan. 2022, 15:00	31 Jan. 2022, 15:00	The LAR process must be completed before the draw for the first training.		
	Women's Singles	07 Feb. 2022, 19:50					
	Doubles	09 Feb. 2022, 20:20					
	Team Relay	10 Feb. 2022, 21:30					
Short Track Speed Skating	Women's 500m	05 Feb. 2022, 19:00	The first Team Leaders' meeting 03 Feb. 2022, 13:45	03 Feb. 2022, 13:45	The LAR process must be completed no later than the start of the first General Team Leaders' meeting.		
	Men's 1000m	05 Feb. 2022, 19:00					
	Men's 1500m	09 Feb. 2022, 19:00					
	Women's 1000m	09 Feb. 2022, 19:00					
	Men's 500m	11 Feb. 2022, 19:00					
	Women's 1500m	16 Feb. 2022, 19:30					
	Mixed Team Relay	05 Feb. 2022, 19:00				03 Feb. 2022, 13:45	03 Feb. 2022, 13:45
	Women's 3000m Relay	09 Feb. 2022, 19:00 Semi-F				08 Feb. 2022, 12:15	08 Feb. 2022, 12:15
		13 Feb. 2022, 19:00 Final				12 Feb. 2022, 11:00	12 Feb. 2022, 11:00
	Men's 5000m Relay	11 Feb. 2022, 19:00 Semi-F				10 Feb. 2022, 15:00	10 Feb. 2022, 15:00
	16 Feb. 2022, 19:30 Final	15 Feb. 2022, 11:00	15 Feb. 2022, 11:00				
Speed Skating	Men's 500m	12 Feb. 2022, 16:00	The first Team Leaders' meeting (Men) 05 Feb. 2022, 18:05	05 Feb. 2022, 18:05	The LAR process must be completed no later than the start of the first event-specific Team Leaders' meeting for each gender. In exceptional cases, in order to enable a team to compete, the LAR process may be applied for the Team Pursuit events. The LAR process must then be completed no later than the start of the Team Leaders' meeting for the affected phase of the event. This would apply also for the Team Pursuit Final Races (for Women and Men) which will be held on February 15, 2022 at 14:30.		
	Men's 1000m	18 Feb. 2022, 16:30					
	Men's 1500m	08 Feb. 2022, 18:30					
	Men's 5000m	06 Feb. 2022, 16:30					
	Men's 10000m	11 Feb. 2022, 16:00					
	Men's Mass Start	19 Feb. 2022, 15:00					
	Men's Team Pursuit	13 Feb. 2022, 21:00				12 Feb. 2022, 17:48	12 Feb. 2022, 17:48
	Women's 500m	13 Feb. 2022, 21:00					
	Women's 1000m	17 Feb. 2022, 16:30					
	Women's 1500m	07 Feb. 2022, 16:30				The first Team Leaders' meeting (Women) 04 Feb. 2022, 14:20	04 Feb. 2022, 14:20
	Women's 3000m	05 Feb. 2022, 16:30					
	Women's 5000m	10 Feb. 2022, 20:00					
Women's Mass Start	19 Feb. 2022, 15:00						
Women's Team Pursuit	12 Feb. 2022, 16:00	11 Feb. 2022, 18:07	11 Feb. 2022, 18:07				
Figure Skating	Men's Single Skating	08 Feb. 2022, 09:15	06 Feb. 2022, 14:45	06 Feb. 2022, 13:45	For the individual events, the LAR process must be completed no later than one (1) hour before the first Draw meeting for each event. For the Team Event, the LAR process must be completed no later than one (1) hour before each Team Confirmation meeting. If an athlete/couple has competed in any segment, they cannot be replaced using the LAR process.		
	Ice Dance	12 Feb. 2022, 19:00	10 Feb. 2022, 15:30	10 Feb. 2022, 14:30			
	Women's Single Skating	15 Feb. 2022, 18:00	13 Feb. 2022, 10:30	13 Feb. 2022, 09:30			
	Pair Skating	18 Feb. 2022, 18:30	16 Feb. 2022, 12:45	16 Feb. 2022, 11:45			
	Team Event		04 Feb. 2022	03 Feb. 2022, 10:00 (Men/Ice Dance/Pairs - Short/Rhythm)		03 Feb. 2022, 09:00	
			06 Feb. 2022	05 Feb. 2022, 10:00 (Women - Short)		05 Feb. 2022, 09:00	
Curling	Mixed Doubles Curling	02 Feb. 2022, 20:05	02 Feb. 2022, 09:00		The LAR process must be completed before the end of the Team Meeting for the appropriate event.		
	Men's Curling	09 Feb. 2022, 20:05		the end of the meeting			
	Women's Curling	10 Feb. 2022, 09:05	08 Feb. 2022, 11:00				
	Women's Tournament	03 Feb. 2022, 12:10	the First Directorate meeting 02 Feb. 2022, 10:00	03 Feb. 2022, 10:10			
Ice Hockey	Men's Tournament	02 Feb. 2022, 18:00	the First Directorate meeting 02 Feb. 2022, 14:00	02 Feb. 2022, 14:00	Individual players cannot be replaced once their place on the team roster has been confirmed (either at the First Directorate meeting, or no later than two (2) hours before the first round of the competition).		
	Women's Tournament	02 Feb. 2022, 18:00					

DSI Change Log

Date	Done By	Discipline	Event	Updates	Comments
2021.12.9	IF/IOC	ALL	ALL	ALL	V1.0 Published
2021.12.13	FIS	ALP	Women' Super-G Men's Giant Slalom Women' Alpine Combined	"Date and Time of Technical Meeting updated; LAR Process Deadline updated	V1.1

Yanqing National Alpine Skiing Centre Competition Area Master Plan



LEGEND 图例

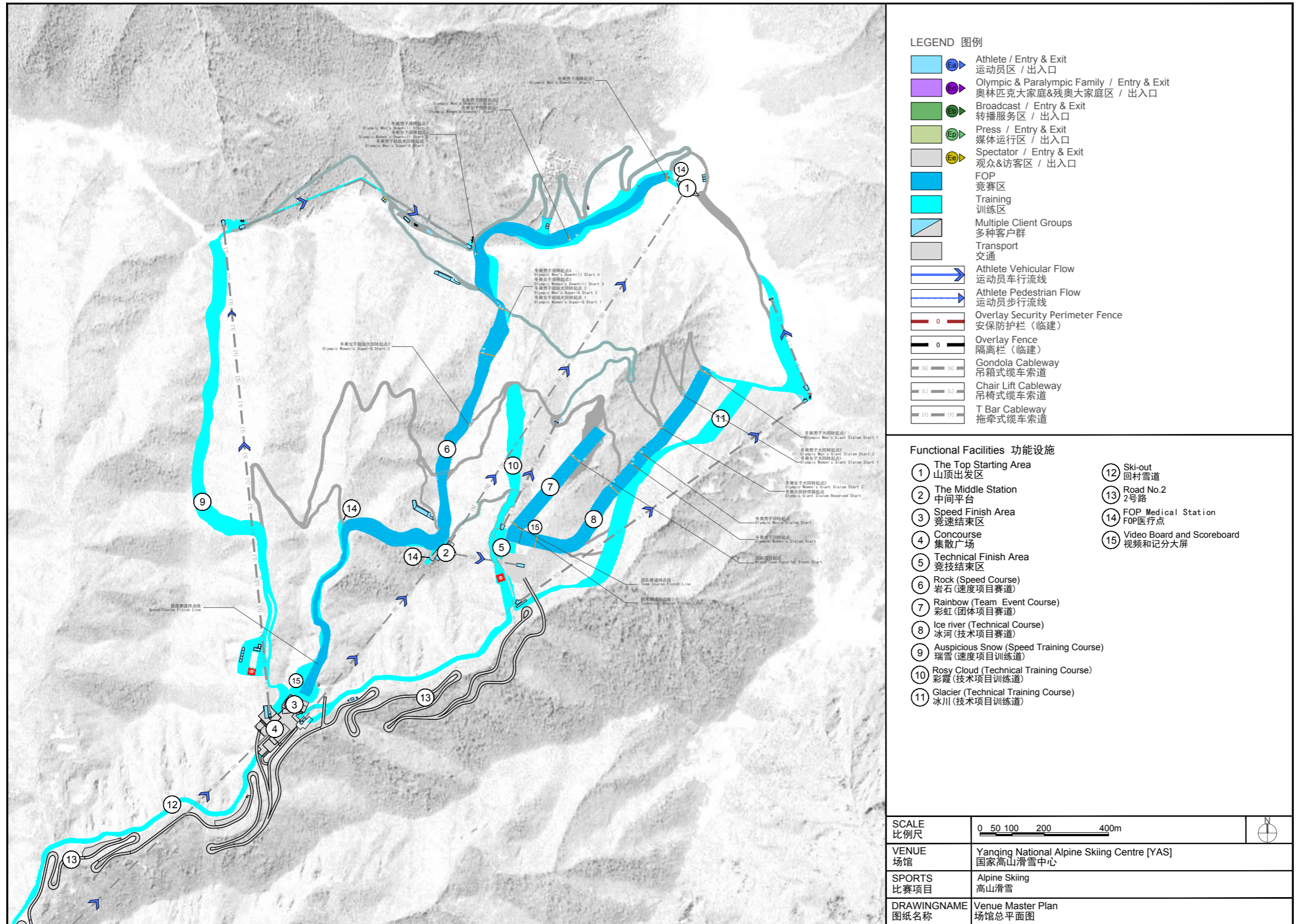
- Athlete / Entry & Exit
运动员区 / 出入口
- Olympic & Paralympic Family / Entry & Exit
奥林匹克大家庭&残奥大家庭区 / 出入口
- Broadcast / Entry & Exit
转播服务区 / 出入口
- Press / Entry & Exit
媒体运行区 / 出入口
- Spectator / Entry & Exit
观众&访客区 / 出入口
- FOP
竞赛区
- Training
训练区
- Multiple Client Groups
多种客户群
- Transport
交通
- Athlete Vehicular Flow
运动员车行流线
- Athlete Pedestrian Flow
运动员步行流线
- Overlay Security Perimeter Fence
安保防护栏 (临建)
- Overlay Fence
隔离栏 (临建)
- Gondola Cableway
吊箱式缆车索道
- Chair Lift Cableway
吊椅式缆车索道
- T Bar Cableway
拖牵式缆车索道

Functional Facilities 功能设施

- (A)** Yanqing National Alpine Skiing Centre
国家高山滑雪中心
- (B)** Yanqing National Sliding Centre
国家雪车雪橇中心
- (C)** Yanqing Olympic-Paralympic Village
延庆冬奥村/冬残奥村
- (L)** Cable Car Station
缆车站
- (1)** The Top Starting Area
山顶出发区
- (2)** The Middle Station
中间平台
- (3)** Speed Finish Area
竞速结束区
- (4)** Concourse
集散广场
- (5)** Technical Finish Area
竞技结束区
- (6)** Rock (Speed Course)
岩石 (速度项目赛道)
- (7)** Rainbow (Team Event Course)
彩虹 (团体项目赛道)
- (8)** Ice River (Technical Course)
冰河 (技术项目赛道)
- (9)** Auspicious Snow (Speed Training Course)
瑞雪 (速度项目训练道)
- (10)** Rosy Cloud (Technical Training Course)
彩霞 (技术项目训练道)
- (11)** Glacier (Technical Training Course)
冰川 (技术项目训练道)
- (12)** Ski-out
回村雪道
- (13)** Road No.2
2号路
- (14)** Wax Cabin
打蜡房
- (15)** NOC/NPC Parking
NOC/NPC停车区
- (16)** TA Transport Mall
运动员班车站
- (17)** Gondola A Bottom Station
A缆车下站
- (18)** YAS Load & Drop-off Area
高山滑雪场馆上落客区

SCALE 比例尺	0 80 160 320 640m	
VENUE 场馆	Yanqing National Alpine Skiing Centre [YAS] 国家高山滑雪中心	
SPORTS 比赛项目	Alpine Skiing 高山滑雪	
DRAWINGNAME 图纸名称	Competition Area Master Plan 赛区总平面图	

Yanqing National Alpine Skiing Centre Master Plan



LEGEND 图例

- Athlete / Entry & Exit
运动员区 / 出入口
- Olympic & Paralympic Family / Entry & Exit
奥林匹克大家庭&残奥大家庭区 / 出入口
- Broadcast / Entry & Exit
转播服务区 / 出入口
- Press / Entry & Exit
媒体运行区 / 出入口
- Spectator / Entry & Exit
观众&访客区 / 出入口
- FOP
竞赛区
- Training
训练区
- Multiple Client Groups
多种客户群
- Transport
交通
- Athlete Vehicular Flow
运动员车行流线
- Athlete Pedestrian Flow
运动员步行流线
- Overlay Security Perimeter Fence
安保防护栏 (临建)
- Overlay Fence
隔离栏 (临建)
- Gondola Cableway
吊箱式缆车索道
- Chair Lift Cableway
吊椅式缆车索道
- T Bar Cableway
拖牵式缆车索道

Functional Facilities 功能设施

- ① The Top Starting Area
山顶出发区
- ② The Middle Station
中间平台
- ③ Speed Finish Area
竞速结束区
- ④ Concourse
集散广场
- ⑤ Technical Finish Area
竞技结束区
- ⑥ Rock (Speed Course)
岩石 (速度项目赛道)
- ⑦ Rainbow (Team Event Course)
彩虹 (团体项目赛道)
- ⑧ Ice river (Technical Course)
冰河 (技术项目赛道)
- ⑨ Auspicious Snow (Speed Training Course)
瑞雪 (速度项目训练道)
- ⑩ Rosy Cloud (Technical Training Course)
彩霞 (技术项目训练道)
- ⑪ Glacier (Technical Training Course)
冰川 (技术项目训练道)
- ⑫ Ski-out
回村雪道
- ⑬ Road No.2
2号路
- ⑭ FOP Medical Station
FOP医疗点
- ⑮ Video Board and Scoreboard
视频和记分大屏

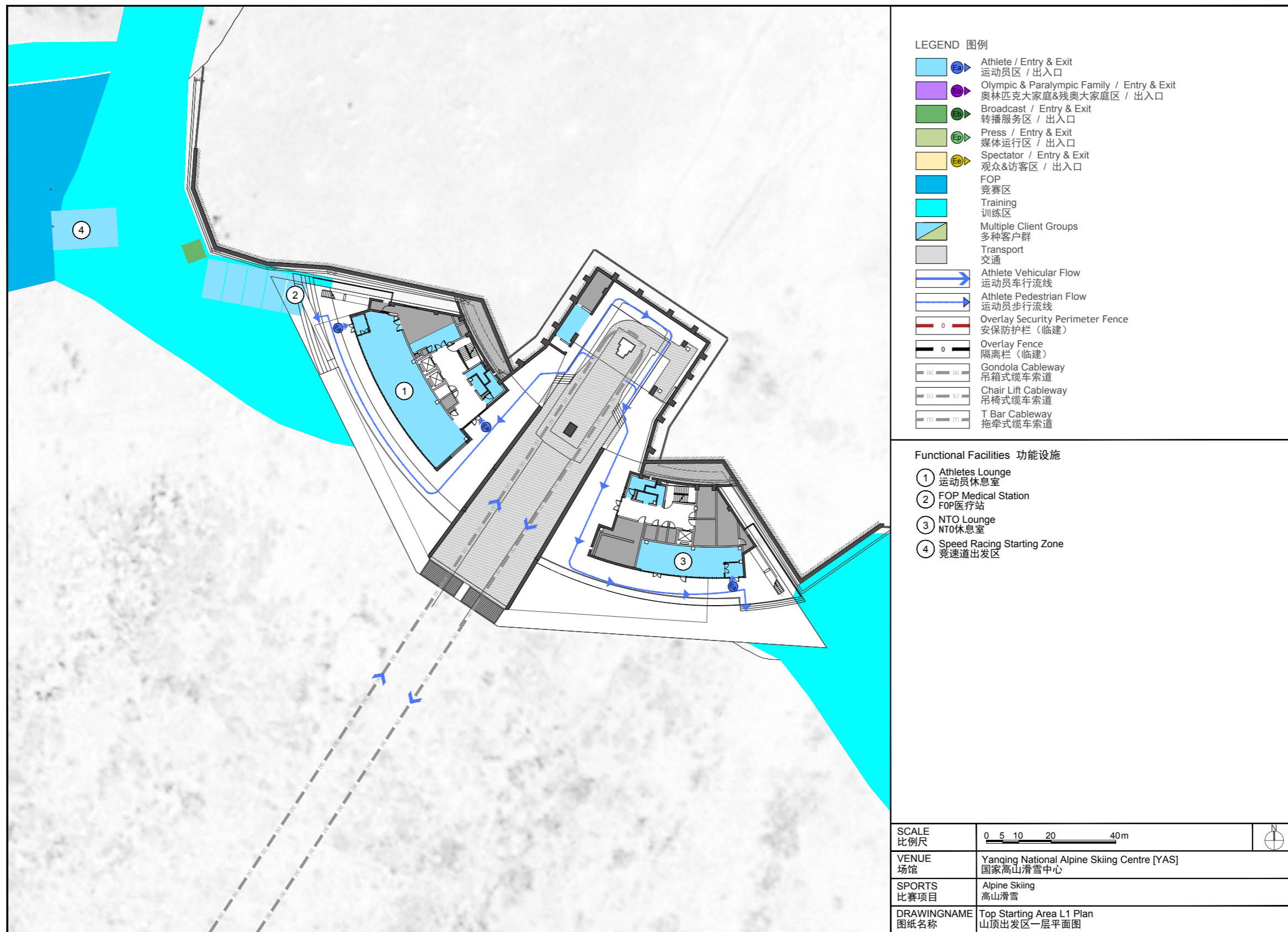
SCALE 比例尺 0 50 100 200 400m

VENUE 场馆 Yanqing National Alpine Skiing Centre [YAS]
国家高山滑雪中心

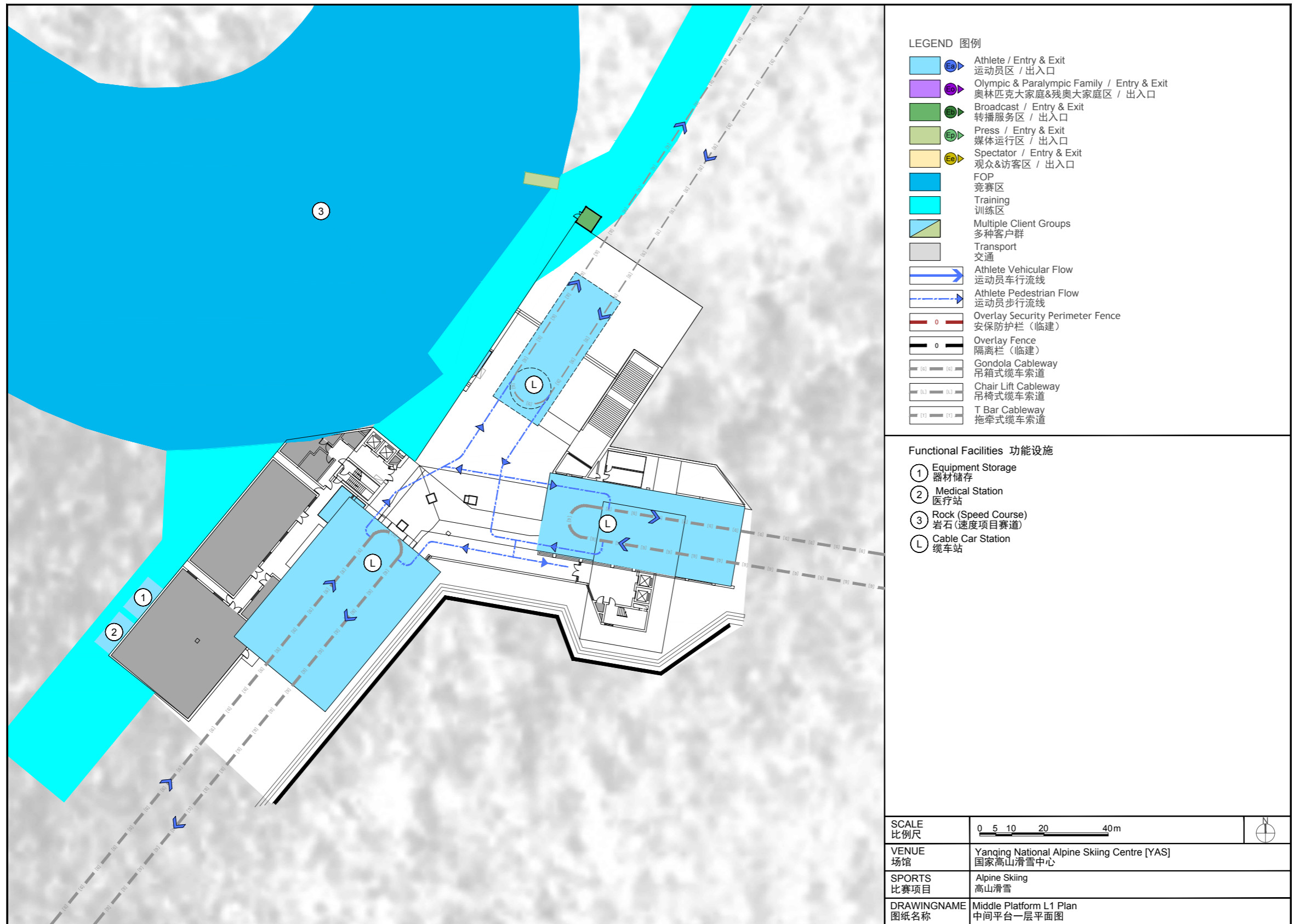
SPORTS 比赛项目 Alpine Skiing
高山滑雪

DRAWINGNAME 图纸名称 Venue Master Plan
场馆总平面图

Yanqing National Alpine Skiing Centre Top Starting Area L1 Plan



Yanqing National Alpine Skiing Centre Middle Platform L1 Plan



LEGEND 图例

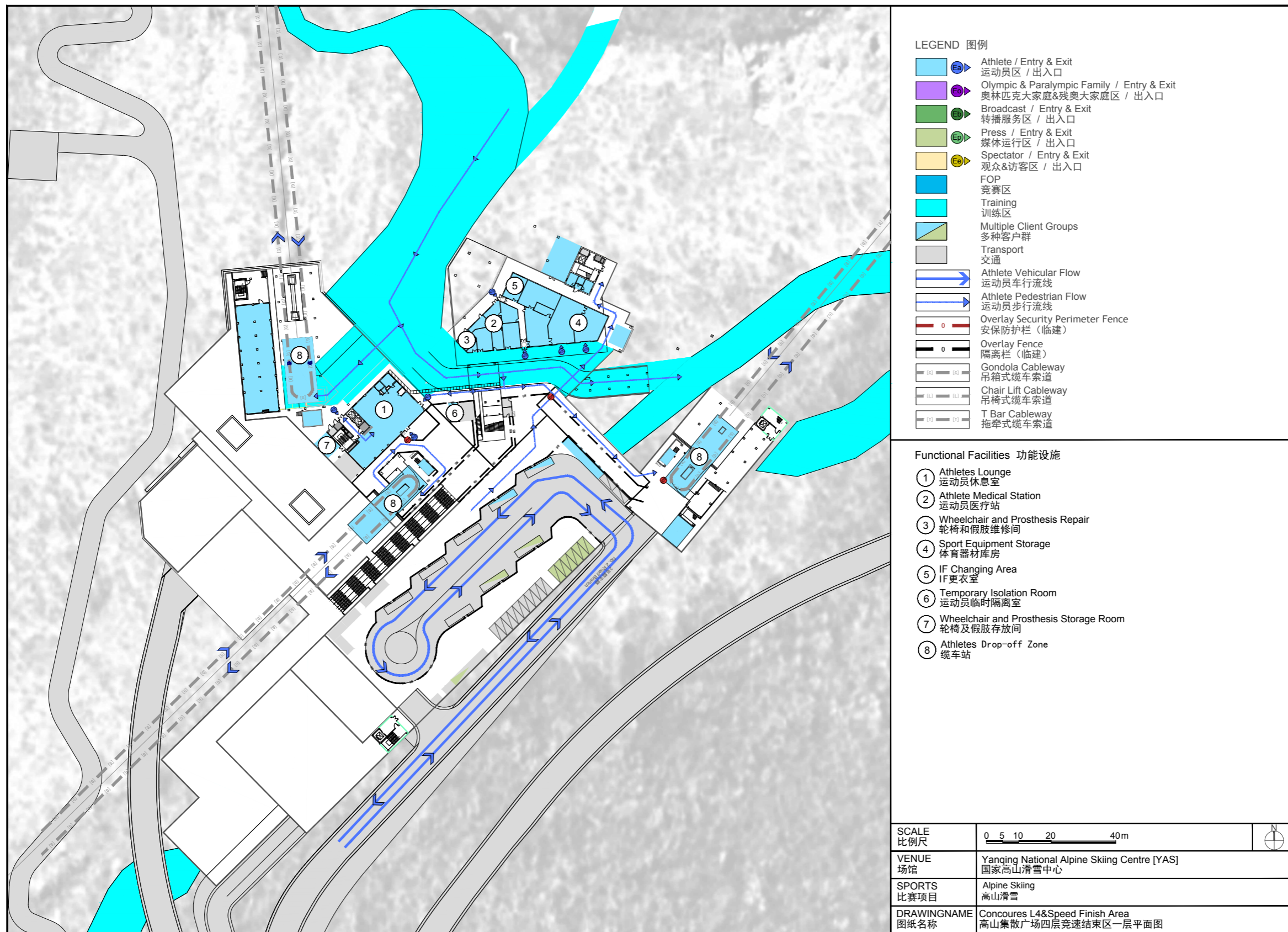
- Athlete / Entry & Exit
运动员区 / 出入口
- Olympic & Paralympic Family / Entry & Exit
奥林匹克大家庭&残奥大家庭区 / 出入口
- Broadcast / Entry & Exit
转播服务区 / 出入口
- Press / Entry & Exit
媒体运行区 / 出入口
- Spectator / Entry & Exit
观众&访客区 / 出入口
- FOP
竞赛区
- Training
训练区
- Multiple Client Groups
多种客户群
- Transport
交通
- Athlete Vehicular Flow
运动员车行流线
- Athlete Pedestrian Flow
运动员步行流线
- Overlay Security Perimeter Fence
安保护栏 (临建)
- Overlay Fence
隔离栏 (临建)
- Gondola Cableway
吊箱式缆车索道
- Chair Lift Cableway
吊椅式缆车索道
- T Bar Cableway
拖牵式缆车索道

Functional Facilities 功能设施

- ① Equipment Storage
器材储存
- ② Medical Station
医疗站
- ③ Rock (Speed Course)
岩石 (速度项目赛道)
- L Cable Car Station
缆车站

SCALE 比例尺	0 5 10 20 40m	N
VENUE 场馆	Yanqing National Alpine Skiing Centre [YAS] 国家高山滑雪中心	
SPORTS 比赛项目	Alpine Skiing 高山滑雪	
DRAWINGNAME 图纸名称	Middle Platform L1 Plan 中间平台一层平面图	

Yanqing National Alpine Skiing Centre Concourse L4 & Speed Stadium Finish Area



LEGEND 图例

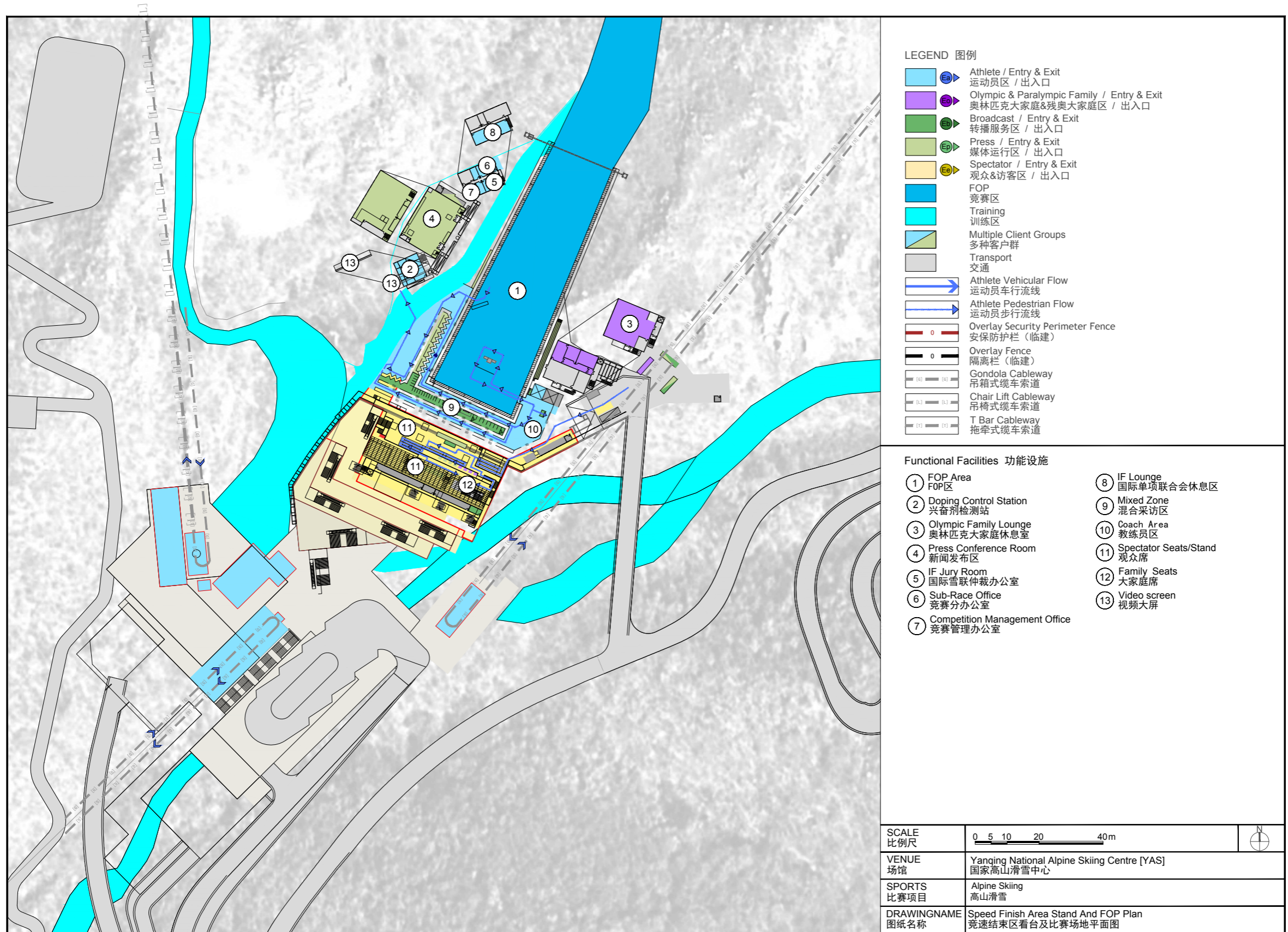
- Athlete / Entry & Exit
运动员区 / 出入口
- Olympic & Paralympic Family / Entry & Exit
奥林匹克大家庭&残奥大家庭区 / 出入口
- Broadcast / Entry & Exit
转播服务区 / 出入口
- Press / Entry & Exit
媒体运行区 / 出入口
- Spectator / Entry & Exit
观众&访客区 / 出入口
- FOP
竞赛区
- Training
训练区
- Multiple Client Groups
多种客户群
- Transport
交通
- Athlete Vehicular Flow
运动员车行流线
- Athlete Pedestrian Flow
运动员步行流线
- Overlay Security Perimeter Fence
安保护栏 (临建)
- Overlay Fence
隔离栏 (临建)
- Gondola Cableway
吊箱式缆车索道
- Chair Lift Cableway
吊椅式缆车索道
- T Bar Cableway
拖牵式缆车索道

Functional Facilities 功能设施

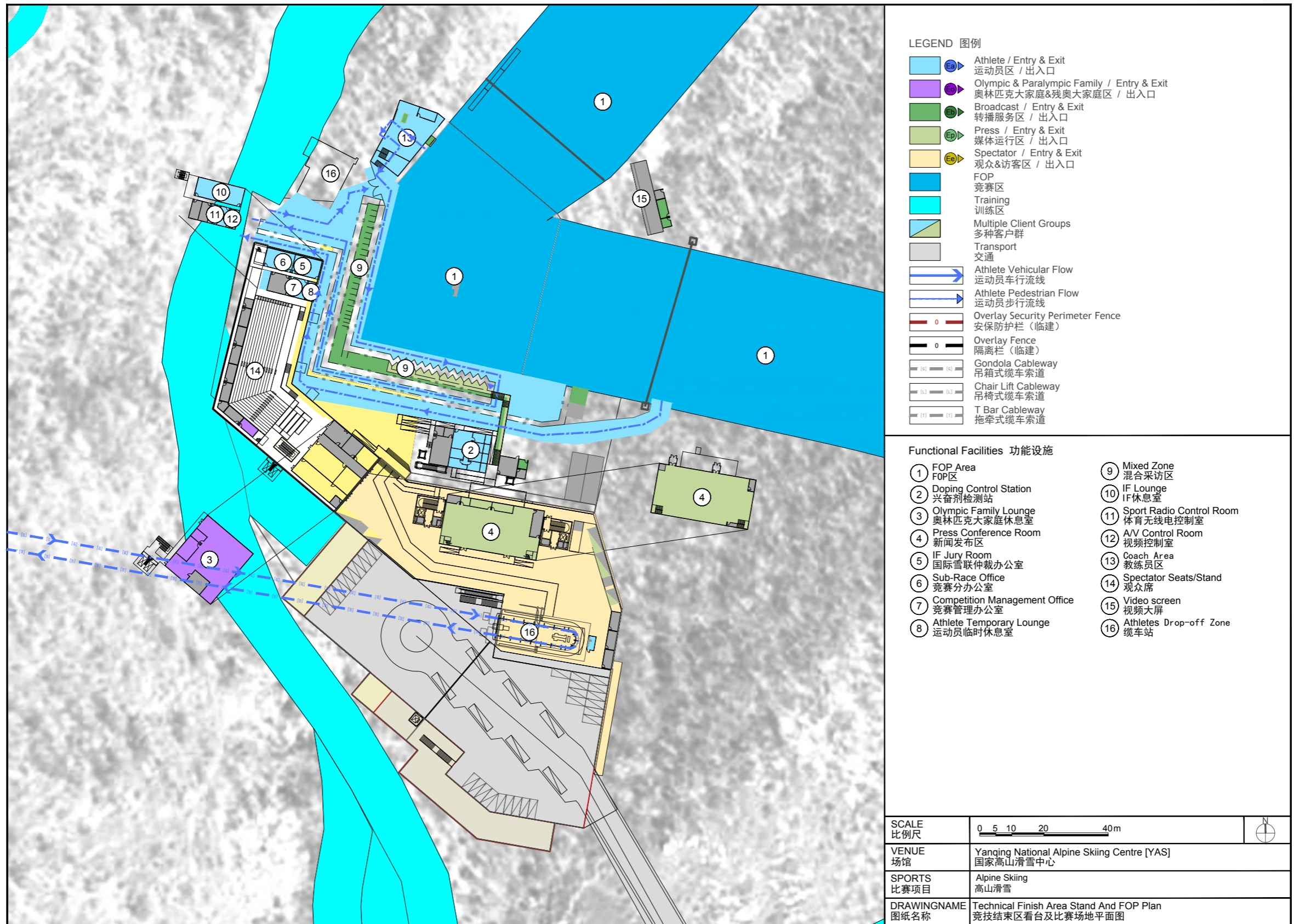
- ① Athletes Lounge
运动员休息室
- ② Athlete Medical Station
运动员医疗站
- ③ Wheelchair and Prosthesis Repair
轮椅和假肢维修间
- ④ Sport Equipment Storage
体育器材库房
- ⑤ IF Changing Area
IF更衣室
- ⑥ Temporary Isolation Room
运动员临时隔离室
- ⑦ Wheelchair and Prosthesis Storage Room
轮椅及假肢存放间
- ⑧ Athletes Drop-off Zone
缆车站

SCALE 比例尺	0 5 10 20 40m	
VENUE 场馆	Yanqing National Alpine Skiing Centre [YAS] 国家高山滑雪中心	
SPORTS 比赛项目	Alpine Skiing 高山滑雪	
DRAWINGNAME 图纸名称	Concourses L4&Speed Finish Area 高山集散广场四层竞速结束区一层平面图	

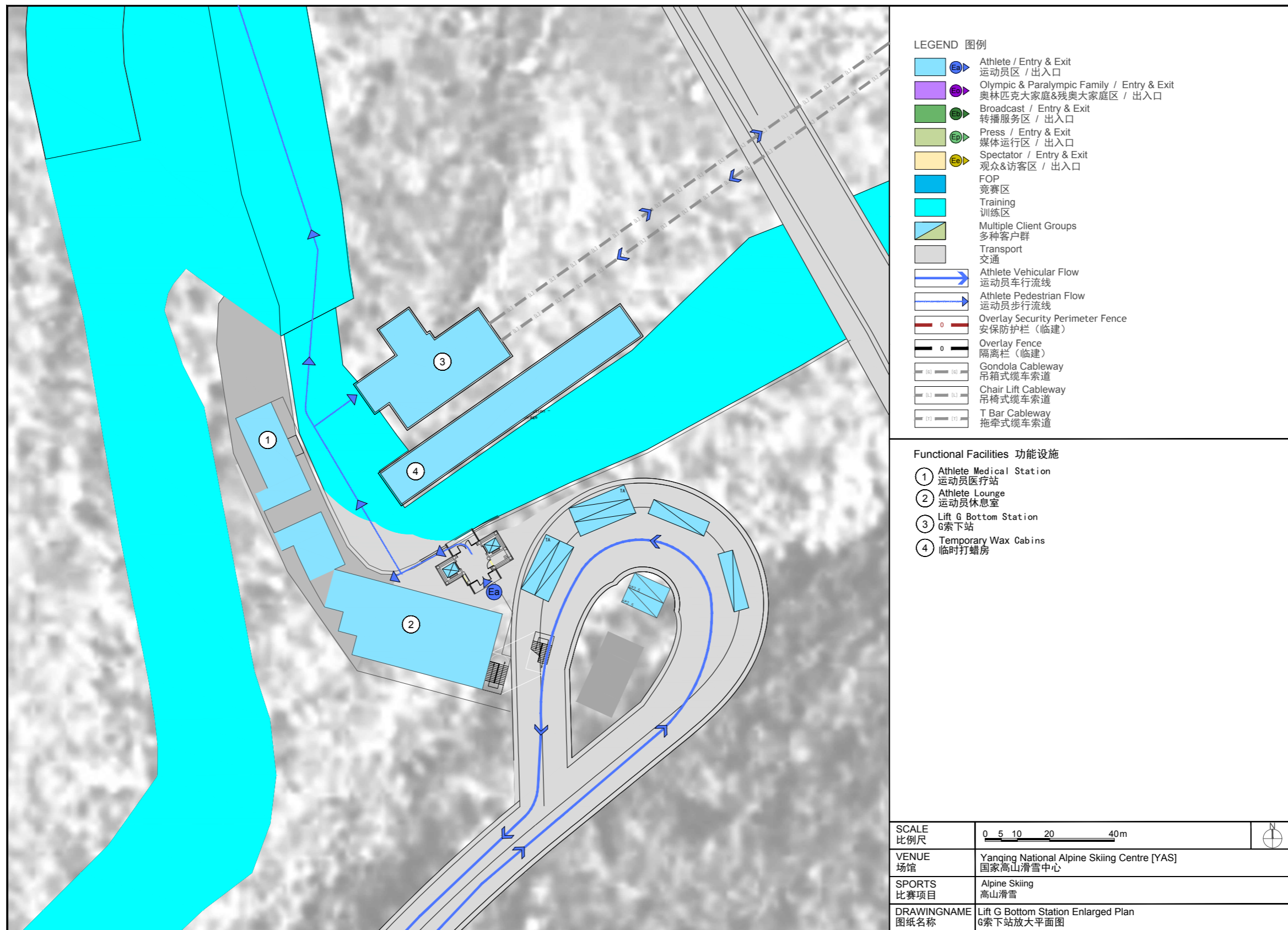
Yanqing National Alpine Skiing Centre Speed Stadium Finish Area Stand and FOP Plan



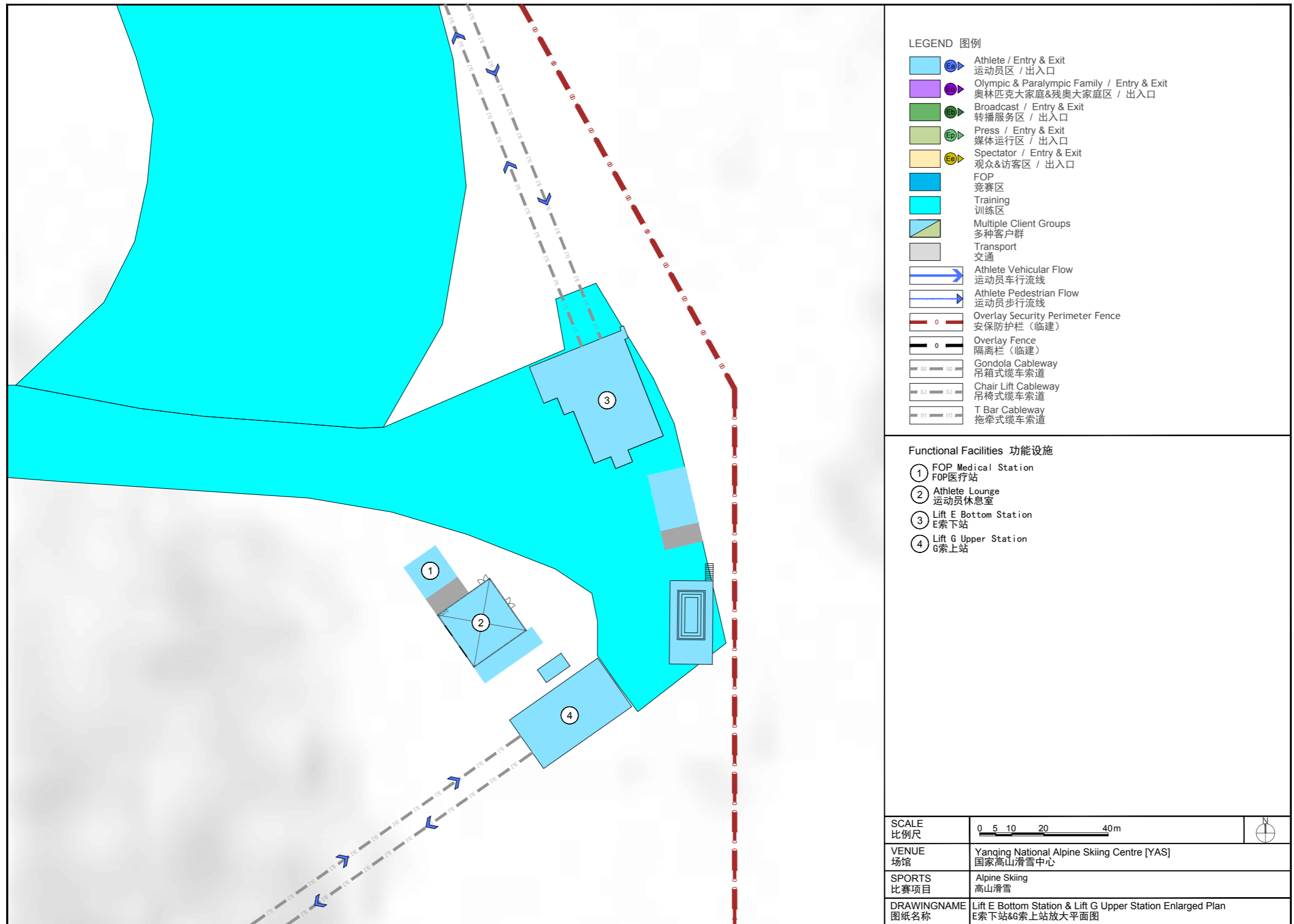
Yanqing National Alpine Skiing Centre Technical Stadium Finish Area Stand and FOP Plan



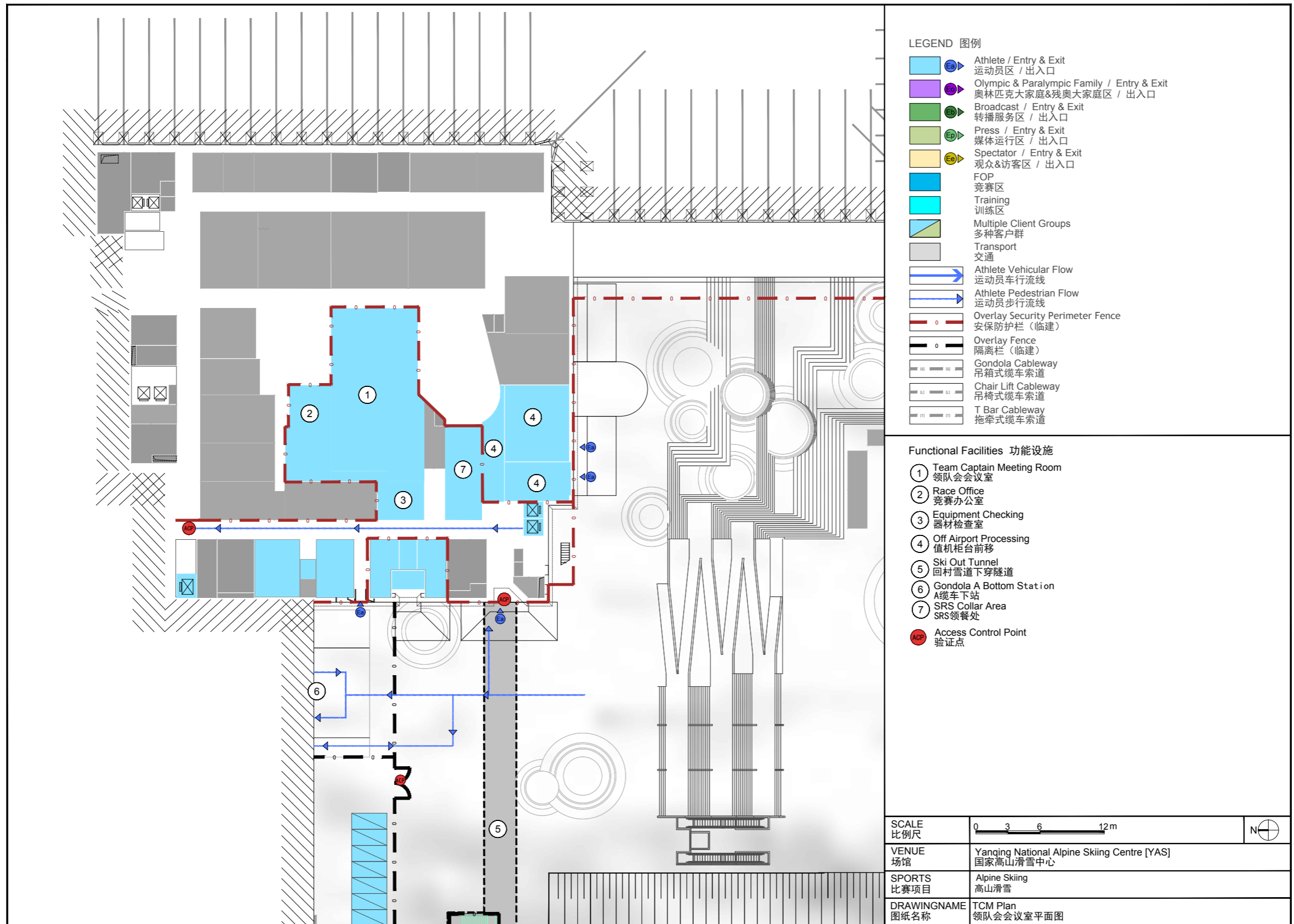
Yanqing National Alpine Skiing Centre Lift G Bottom Station Enlarged Plan



Yanqing National Alpine Skiing Centre Lift E Bottom Station & Lift G Upper Station Enlarged Plan



Yanqing National Alpine Skiing Centre Team Captains' Meeting Room Plan

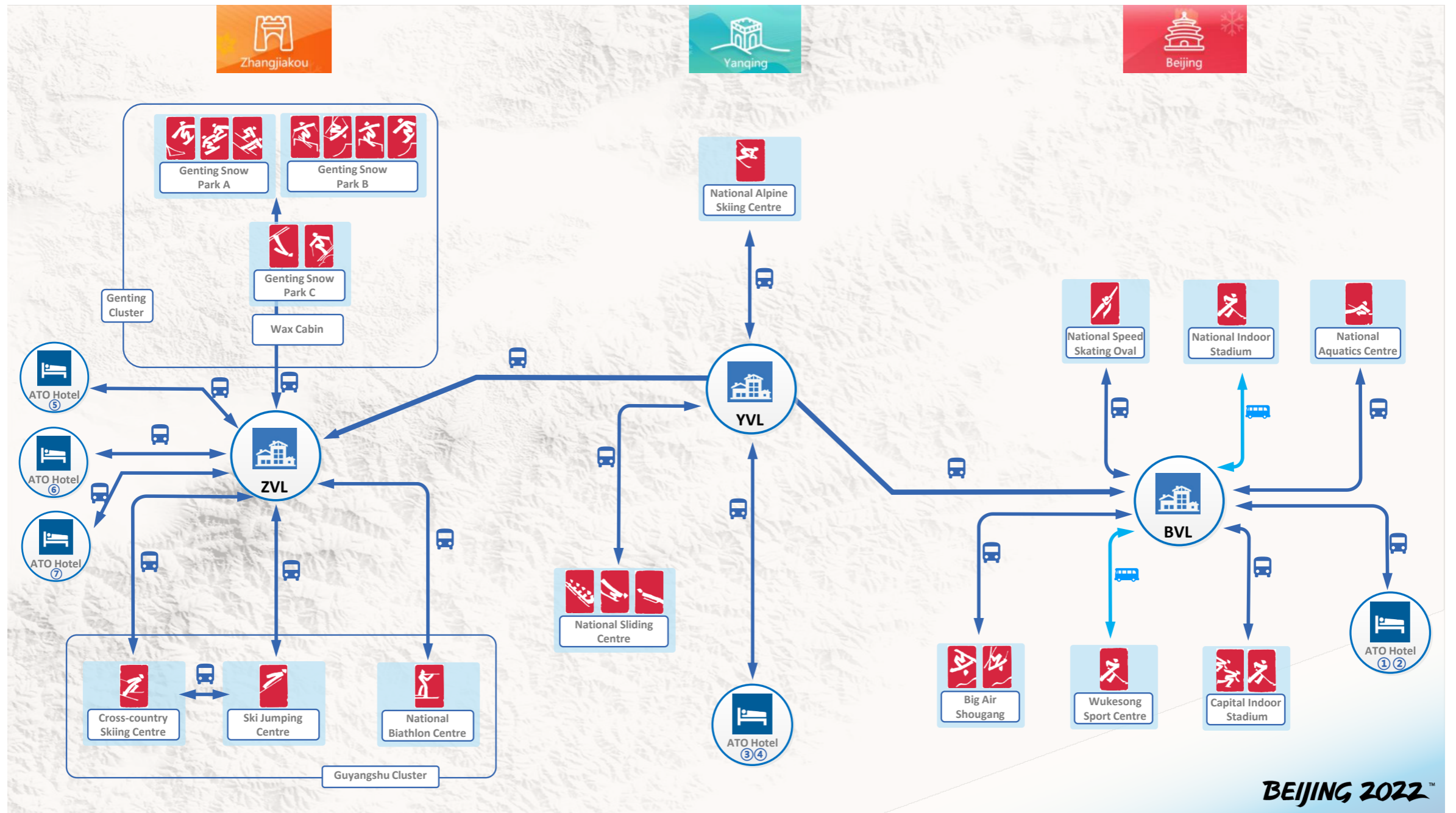


Yanqing Olympic Village Master Plan



- | | |
|--|--|
| ① 运动员班车车站
Transport Mall | ⑩ 值机柜台前移
Off Airport Processing Area |
| ② 注册中心
Accreditation Centre | ⑪ 健身中心
Fitness Centre |
| ③ 访客中心
Village Pass Centre | ⑫ 娱乐中心
Recreation Centre |
| ④ 奥林匹克/残奥大家庭
Olympic/Paralympic Family Area | ⑬ 居民服务中心
Resident Centre |
| ⑤ 媒体中心
Media Centre | ⑭ NOC/NPC服务中心
NOC/NPC Services Centre |
| ⑥ 综合诊所
Polyclinic | ⑮ 代表团团长例会大厅
Chefs de Mission Hall |
| ⑦ 奥运村广场
Village Plaza | ⑯ 超级居民服务中心
Super Resident Centre |
| ⑧ 兴奋剂检查站
Doping Control Station | ⑰ NOC/NPC停车场
NOC/NPC Parking |
| ⑨ 健身中心
Fitness Centre | |

TA Transport



BEIJING 2022™

